

UITLATEN AUSPUFFANLAGE EXHAUSTS



www.mokix.com



2020 7

NUMBER EXPLANATION

03.07 . 375 . 11

Model uitlaat/demper
Modell Auspuff/dämpfer
Modell Exhaust/silencer

(Silent-Pro)

Merk/Model
Marke/Modell
Brand/Model

(Minarelli horizontaal)

Uitvoering/keuring
Ausführung/Prüfung
Version/proofing

(CE Zwart)

PROOFING EXPLANATION



NON CE

Bouwman	Tecnigas	
11	11	CE Zwart / Blank / RVS
11B	11B	CE Anodized Black
16	16	CE RVS
27	27	CE Blank
CE	91	CE Zwart / Blank
31	31	CE Blank
RCE	11	CE Blank
22	22	CE Chroom
RCECR	12	CE Chroom
21	21	CE Chroom / Alu / Steel
12	12	CE Eco Chroom / Chroom
92	92	CE Chroom
21B	21B	CE Anodized Black
36	36	CE RVS
17	17	CE Blank

Bouwman	Tecnigas	
1	1	Non CE / Steel
6	6	Non CE / RVS
Geen	none	Non CE Blank / Alu
30	30	Non CE Blank
R	none	Non CE Blank
RCR	2	Non CE Chroom
2	2	Non CE Chroom
20	20	Non CE Chroom

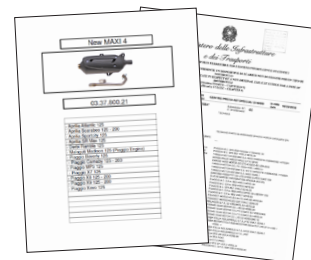
**LOOKING FOR A REFERENCE
OR HOMOLOGATION?**

DOWNLOAD



MOKIX

MOKIX.COM





Our team has more than twenty years' experience in the design and manufacture of exhaust pipes for mopeds and motorbikes.

Our facilities are equipped with the most modern technology, both for the development of new products and for their production. Our priorities are, on the one hand, the quality and performance of our exhaust pipes, and on the other hand, respect for the environment. Technigas is one of the first Spanish manufacturers to obtain the new EC/24/97 homologations for devices of exhaust pipe for mopeds, compulsory since 18 June 1999.



Technigas HQ - Spain

This way of working has enabled our group to become the foremost national manufacturer of exhaust pipes for scooters and mopeds and one of the European leaders in this field.

INDEX

EXHAUSTS

SILENT-PRO 2T	4
SILENT-PRO 4T	6
BASIC	8
ORIGINAL-PRO	10
NEXT R	12
NEXT R CHROMED	14
Q-TRE	16
Q-TRE CHROMED	16
TRIOPS	18
RS-II	18
GP-4	20
4SCOOT-TRE	22
4SCOOT-TRE BLACK	22
NEXT-R AUTOMATIC	24
E-NOX EVO	26
E-NOX EVO STEEL	26

E-NOX	28
E-NOX STEEL	28
G-BOX	30
XS	30
4SCOOT EVO	32
4SCOOT EVO BLACK	34
MAXI-4	36
MAXI-4N	38
4SCOOT	40
PX200	42
QUADDER	42

REFERENCES

SCOOTER 50cc - 125cc 2T	44
SCOOTER 50cc - 125cc 4T	56
MOPED 50cc	60
MAXISCOOTER	64
SILENCERS	67



SILENT-PRO 2T

Optimum performance with minimum noise level.



GASKET



INCLUDED

MOUNTINGKIT



INCLUDED



- Steel structure
- Low noise level
- Maximum performance as a silencer
- Resistance and durability
- Design very similar to the original
- EC homologations available according to directive 97/24/EC



SILENT-PRO 2T

2T SCOOTER

03.07.040.11	PIAGGIO SCOOTER CE	
03.07.044	PIA SFERA/TYPHOON 80	NON CE
03.07.053.11	PIAGGIO SFERA/ET2 CE	
03.07.053.11LX	PIAGGIO/VESPA LX 2T CE	
03.07.066	DERBI HUNTER/ATLANTIS	NON CE
03.07.160.11	HONDA SCOOPY 75cc CE	
03.07.161.11	KYMCO/DAELIM CE	
03.07.162	HONDA SCOOPY 50	NON CE
03.07.163.11	HONDA SFX/BALI CE	
03.07.164	DAELIM S/E-FIVE	NON CE
03.07.166	HONDA VISION 2T	NON CE
03.07.167.11	SCOOPY 100 CE	
03.07.169.11	SCOOPY >96 50 CE	
03.07.171	HONDA BALI100	NON CE
03.07.173	HONDA X8R / SKY	NON CE
03.07.180	HYOSUNG SUPERCAB	NON CE
03.07.181	ITALJET FORMULA	NON CE
03.07.182	HYOSUNG SF50	NON CE
03.07.183	HYOSUNG RUSH 25km	NON CE
03.07.240	PEU SV50	NON CE
03.07.241.11	PEU OT CE	

2T SCOOTER

03.07.242.11	PEU NT CE	
03.07.243	PEU SV80	NON CE
03.07.244	PEU SV125	NON CE
03.07.247	PEU VERT 25km OPEN	NON CE
03.07.250.11	PEU HORZ 2T AC/LC CE	
03.07.251	PEUGEOT HORZ 25km OPEN	NON CE
03.07.252.11	PEU VIVACITY 3 2T CE	
03.07.300.11	PGO BIG MAX CE	
03.07.301	PGO COMET	NON CE
03.07.360.11	DERBI/SUZUKI CE	
03.07.362	SUZUKI CP50	NON CE
03.07.363.11	MORINI NT CE	
03.07.366	APRILIA SR DI-TECH 50	NON CE
03.07.375.11	MINARELLI HORZ CE	
03.07.376.11	MINARELLI VERTICAAL CE	
03.07.377	ITALJET ASCOT/BAZOOKA	NON CE
03.07.380	MINARELLI 100cc	NON CE
03.07.381.11	CPI E1 CE	
03.07.382	YAMAHA NEO'S 25km OPEN	NON CE
03.07.383.11	CHINA 2T/CPI E2 CE	
03.07.503.11	KYMCO TOPBOY/SUPER9 CE	

€ 99,⁹⁰

SILENT-PRO

SILENT-PRO 4T

Optimum performance with minimum noise level.

NON CE

GASKET



INCLUDED

MOUNTINGKIT



INCLUDED




- Steel structure
- Low noise level
- Maximum performance as a silencer
- Resistance and durability
- Design very similar to the original
- EC homologations available according to directive 97/24/EC



Screw instead of LAMBDA sensor.

SILENT-PRO 4T

4T SCOOTER

03.07.045	PIAGGIO ZIP 4T 2V	
03.07.055	PIAGGIO LX 4T 4V	
03.07.176	HONDA VISION 50 NM 4T	
03.07.505.11	CHINA 4T GY6 CE	
03.07.750	CHINA GRAND RETRO 4T	
03.07.751	SYM MIO 4T	
03.07.752	SYM FIDDLE II/ORB II new engine	
03.07.753	SYM CELLO/ALLO NM 4T	
03.07.754	SYM FIDDLE II 4T (oude motor)	
03.07.755	SYM SYMPHONY PEUGEOT TWEET 4T	
03.07.756	SYM X-PRO 4T	

€ 104,⁹⁰

WITH LAMBDA CONNECTION

4T SCOOTER

03.07.057	PIAGGIO ZIP 4T e4	
03.07.700*	CHINA CLASSIC LX e1/e4 4T	
03.07.757*	SYM FIDDLE III 50 4T	

€ 109,⁹⁰

* These exhausts can also be used for e1/e3 models with screw in place of the lambda sensor connection

BASIC

Maximum balance between performance, resistance and price.



NON CE

GASKET



INCLUDED

MOUNTINGKIT



INCLUDED

- Steel structure
- Low noise level
- Keep performance from the original
- Effectiveness and resistance
- Original design
- EC homologations available according to directive 97/24/EC



BASIC

2T SCOOTER

03.08.053.11 APRILIA HABANA (Piaggio) 

03.08.184 TGB DELIVERY

03.08.365 APRILIA HABANA (Morini)


€ 89,⁹⁰

tecni gas

2T SCOOTER

UNTIL STOCKS

03.08.066 DERBI HUNTER/PADDOCK/ATLANT

03.08.161.11 HONDA DIO/KYMCO CURIO CE 

03.08.162 HONDA SCOOPY 50

03.08.301 PGO COMET/GALAXY

03.08.366 APRILIA SR DITECH

€ 79,⁹⁰

BASIC

ORIGINAL-PRO

Original look keeping up the best performances with minimum noise level.



GASKET



INCLUDED

MOUNTINGKIT

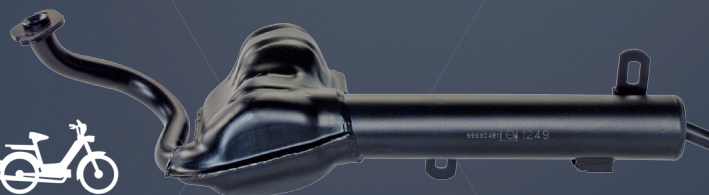


INCLUDED

- Steel structure
- Low noise level
- Maximum performance as a silencer



- Resistance and durability
- Design very similar to the original
- EC homologations available according to directive 97/24/EC



ORIGINAL-PRO

SCOOTER 50cc

03.27.045.11 ORIGINAL-PRO VESPA LX50 4T 2V CE

03.27.053.11 ORIGINAL-PRO VESPA ET2/LX50 2T CE

03.27.056.11 ORIGINAL-PRO VESPA LX50 4T 4V CE

€ 158,⁹⁰

SCOOTER 125cc

03.27.850.11 ORIGINAL-PRO VESPA LX125 3V CE

03.27.852.11 ORIGINAL-PRO PIAGGIO ET4 125 CE

03.27.853.11 ORIGINAL-PRO PIAGGIO ET4 125i CE

€ 164,⁹⁰

CLASSIC 25cc

03.27.177 ORIGINAL-PRO HONDA WALLAROO 25km

€ 109,⁹⁰

CLASSIC 50cc

3774 ORIGINAL-PRO PEUGEOT FOX CE

87096 ORIGINAL-PRO HONDA WALLAROO CE

€ 69,⁹⁰

MOPED 50cc

06.27.511.11 ORIGINAL-PRO BETA RR e3/e4 CE

06.27.521.11 ORIGINAL-PRO SHERCO 50 SM-R CE

06.27.541.11 ORIGINAL-PRO YAMAHA DT04/PEU CE

€ 99,⁹⁰

NEXT-R

Perfect combination of high performance and low noise level.
Expansion chamber made in 12/10 mm steel finished with black aluminium can.



GASKET



INCLUDED

MOUNTINGKIT



INCLUDED



- High class Technigas racing scooter line
- Steel structure with the cone contracone principle
- Silencer in anodised black alluminium of high quality
- Low noise level
- Maximum performance
- Resistance and durability
- Hand-crafted design
- EC homologations available according to 97/24/EC directive

NEXT-R

2T SCOOTER

06.09.040RCE	PIAGGIO TYPHOON/NRG CE	
06.09.066R	DERBI PADDOCK/ATLANTIS	NON CE
06.09.067R	DERBI PREDATOR	NON CE
06.09.161R	KYMCO DJ/DAELIM MESS	NON CE
06.09.163R	HONDA SFX NO CE	NON CE
06.09.164R	DAELIM S-FIVE	NON CE
06.09.169R	HONDA SCOOPY NT	NON CE
06.09.173R	HONDA X8R NO CE	NON CE
06.09.174R	HONDA DIO AF35	NON CE
06.09.180R	HYOSUNG RUSH	NON CE
06.09.181R	MORINI SCOOTER	NON CE
06.09.182R	HYOSUNG SF50	NON CE
06.09.186R	TGB BULLET RS	NON CE
06.09.241RCE	PEUGEOT ot CE	
06.09.242RCE	PEUGEOT nt CE	
06.09.243R	PEUGEOT SPEEDFIGHT 100	NON CE
06.09.250RCE	PEUGEOT HORZ 2T AC/LC CE	
06.09.300RCE	PGO BIG MAX CE	
06.09.360R	SUZUKI ADDRESS/VAMOS	NON CE

2T SCOOTER

06.09.375RCE	MINARELLI HORIZONTAAL CE	
06.09.376RCE	MINARELLI VERTICAAL CE	
06.09.379RCE	MORINI KATANA CE	
06.09.380R	MINARELLI 100cc	NON CE
06.09.381RCE	CPI E1 CE	
06.09.383RCE	CPI E2/POPCORN/HUSSAR CE	
06.09.384RCE	CPI GTR CE	
06.09.503R	KYMCO SUPER 9	NON CE

4T SCOOTER

06.09.045R	PIAGGIO 50 4T 2V	NON CE
06.09.505RCE	CHINA 4T CE	

€ 129,⁹⁰

NEXT-R CHROMED

Perfect combination of high performance and low noise level.
Expansion chamber made in 12/10 mm steel finished with black aluminium can.



GASKET



INCLUDED

MOUNTINGKIT



INCLUDED

- Hight class Tecnigas racing scooter line
- Steel structure with the cone contracone principle
- Silencer in anodised black alluminium of high quality
- Low noise level
- Maximum performance
- Resistance and durability
- Hand-crafted design
- EC homologations available according to 97/24/EC directive

NEXT-R CHROMED

2T SCOOTER

06.09.040RCECR PIAGGIO CE

06.09.066RCR DERBI ATLANTIS

NON CE

06.09.067RCR DERBI PREDATOR

NON CE

06.09.161RCR KYMCO DJ50Y

NON CE

06.09.163RCR HONDA SFX

NON CE

06.09.181RCR ITALJET FORMULA

NON CE

06.09.186RCR TGB BULLET RS

06.09.242RCECR PEUGEOT CE

06.09.250RCECR PEUGEOT HORZ 2T AC/LC CE

06.09.375RCECR MINARELLI HORZ CE

06.09.376RCECR MINARELLI VERT CE

06.09.379RCECR MORINI SCOOTER CE

06.09.380RCR MINARELLI 100cc

NON CE

06.09.383RCECR CPI E2 CE

06.09.384RCECR CPI GTR CE

06.09.503RCR KYMCO S9/VITALITY

NON CE

4T SCOOTER

06.09.505RCECR GY6 CHINA 4T CE

€ 154,⁹⁰

Q-TRE

High performances for low budgets.



- Low Cost Racing Scooter Line
- Steel structure

- Black Aluminium Silencer
- EC homologations available according to directive 97/24/EC



GASKET



INCLUDED

MOUNTINGKIT



INCLUDED

Q-TRE CHROMED

High performances for low budgets with the more durable and neatly done finish.



- Steel structure in chromed
- Its structure perfectly fits scooter dimensions
- Notable improvement in performance

- Extra durability thanks to the chromed quality
- EC homologations available according to 97/24/EC directive

Q-TRE

2T SCOOTER

06.08.040.11 PIAGGIO 2T CE

06.08.242.11 PEUGEOT VERTICAAL CE

06.08.250.11 PEUGEOT HORZ 2T AC/LC CE

06.08.375.11 MINARELLI HORIZONTAAL CE

06.08.376.11 MINARELLI VERTICAAL CE

06.08.383.11 CHINA 2T E2 CE

06.08.503 KYMCO HORIZONTAAL

NON CE

€ 114,⁹⁰

Q-TRE CHROMED

2T SCOOTER

06.08.040.12 PIAGGIO 2T CE CHROOM

06.08.242.12 PEUGEOT VERTICAAL CE CHROOM

06.08.250.12 PEUGEOT HORZ 2T AC/LC CE CHROOM

06.08.375.12 MINARELLI HORZ CE CHROOM

06.08.376.12 MINARELLI VERT CE CHROOM

06.08.383.12 CHINA 2T e2 CE CHROOM

06.08.503.20 KYMCO HORIZONTAAL CHROOM

NON CE

€ 123,⁹⁰

TRIOPS

Craftwork, high performances and exclusive design.



- Top-quality Technigas racing scooter line
- Steel structure with the cone contracone principle and gas welding
- Silencer in high quality black alluminium
- Low noise level

- Maximum performance
- Resistance and durability
- Hand-crafted design
- EC homologations available according to directive 97/24/EC



GASKET



INCLUDED

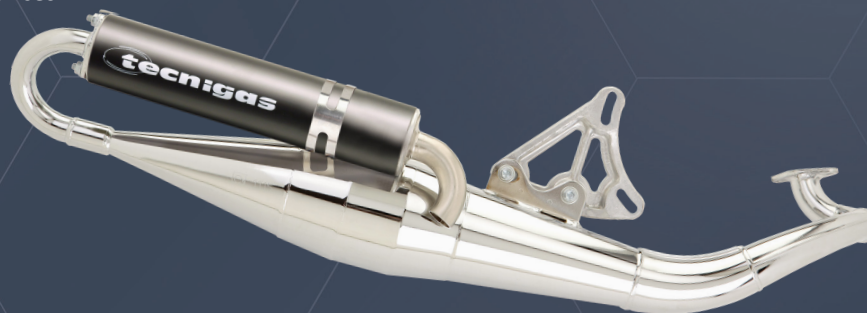
MOUNTINGKIT



INCLUDED

RS-II

Specific lay-out of the expansion chamber and venturi system to provide optimum gas flow for maximal performances.



- Top-quality Technigas racing scooter line
- Steel structure with the cone contracone principle and plasma weldings
- Silencer in high quality black alluminium
- Low noise level

- Maximum performance
- Resistance and durability
- Hand-crafted design
- EC homologations available according to directive 97/24/EC



TRIOPS

2T SCOOTER

06.10.103.30	KYMCO SUPER 9/TOP BOY/VITALITY	NON CE
06.10.140.31	PIAGGIO/GILERA CE	
06.10.142.31	PEUGEOT VERTICAAL CE	
06.10.175.31	MINARELLI HORIZONTAAL CE	
06.10.250.31	PEUGEOT HORIZONTAAL CE	
06.10.383.31	CPI/GENERIC/KEEWAY E2 CE	

€ 199,⁹⁰

RS-II VARNISHED

SCOOTER 50cc-100cc

06.10.380 MINARELLI HORIZONTAAL 100cc

€ 174,⁹⁰

SCOOTER 125cc-180cc


06.10.141 PIAGGIO/APRILIA 125/180cc

€ 229,⁹⁰

CHROMED

SCOOTER 50cc-100cc

06.10.103.02 KYMCO TOP-BOY SUPER 9 (70)

06.10.300.22 PGO BIG MAX/HOT/TORNADO CE 

€ 129,⁹⁰

SCOOTER 125cc-180cc

06.10.141.02 PIAGGIO/APRILIA 125/180

€ 249,⁹⁰

UNTIL STOCKS

tecnigas

GP4

Moto GP Essence



GASKET



INCLUDED

MOUNTINGKIT



INCLUDED



- Racing Look
- Manufactured in steel structure
- High quality finish in nickel
- Homologated according to Directive 97/24EC

GP4

20

GP4

2T SCOOTER 50cc

06.19.045.11 PIAGGIO ZIP50 4T 2V CE

06.19.055.11 PIAGGIO FLY50 4T 4V CE

06.19.056.11 PIAGGIO LX 50 4T 4V CE

06.19.505.11 AGILITY/FILLY CE

06.19.753.11 CELLO/ALLO NT CE

€ 125,⁹⁰

2T SCOOTER 125cc

06.19.850.11 PIAGGIO LX 125 4T 3V CE

€ 149,⁹⁰

technigas

4SCOOT TRE BLACK

Exhaust system with a sporty design approaching 50cc 4T scooters to the look of high c.c. maxiscooters.



GASKET



INCLUDED

MOUNTINGKIT



INCLUDED

- More performance
- Sporty sound
- Black painting
- Homologation available according to Regulation 134/2014/EC.

4SCOOT

4SCOOT TRE BLACK

4T SCOOTER

06.29.045.11B PIA ZIP/FLY/LX 4T 2V 50 AB CE

06.29.505.11B KYMCO AGILITY/GY6 50cc AB CE

€ 174,⁹⁰


technigas

4SCOOT

NEXT-R

Perfect combination of high performance and low noise level.
Expansion chamber made in 12/10 mm steel finished with black aluminium can.



- High class Technigas racing scooter line
- Steel structure with the cone contracone principle
- Silencer in anodised black alluminium of high quality
- Low noise level

- Maximum performance
- Resistance and durability
- Hand-crafted design
- EC homologations available according to 97/24/EC directive

NON CE

GASKET



INCLUDED

MOUNTINGKIT



INCLUDED

NEXT-R CHROMED

Perfect combination of high performance and low noise level.
Expansion chamber made in 12/10 mm steel finished with black aluminium can.



- High class Technigas racing scooter line
- Steel structure with the cone contracone principle
- Silencer in anodised black alluminium of high quality
- Low noise level

- Maximum performance
- Resistance and durability
- Hand-crafted design
- EC homologations available according to 97/24/EC directive

NEXT-R

2T AUTOMATIC

06.09.400R PUCH MAXI

06.09.551R TOMOS A35 STD45 e1/e2

€ 109,⁹⁰

2T AUTOMATIC

06.09.172CE PEUGEOT FOX/WALLAROO CE 

06.09.552R TOMOS STREETMATE

€ 129,⁹⁰

NEXT-R CHROMED

2T AUTOMATIC

06.09.172.92 HONDA WALLAROO CE 

06.09.400RCR PUCH MAXI

06.09.551RCR TOMOS A35

€ 154,⁹⁰

E-NOX EVO

Design and performances to the highest level with a main body in stainless steel AISI 304



- Exhaust body stamped in stainless steel AISI 304
- Silencer in black anodised silencer and end cap in stainless steel AISI 304
- High performances
- Homologation available according to Directive 97/04EC



GASKET



INCLUDED

MOUNTINGKIT



INCLUDED

E-NOX EVO STEEL

Design and performances to the highest level with a main body in steel with heat resistant paint.



- Exhaust body stamped in steel with heat resistant paint
- Silencer in black anodised silencer and end cap in stainless steel AISI 304
- High performances
- Homologation available according to Directive 97/04EC

E-NOX EVO

MOPED 50cc

06.12.511.36 BETA RR 50>16 E4/12-17 E3 RVS CE

06.12.521.36 SHERCO 50 SM-R/SE-R CE

06.12.530.36 DERBI SENDA '00/DRD RVS CE

06.12.542.36 RIEJU MRT RVS CE

€ 249,⁹⁰


technigas

E-NOX EVO STEEL

MOPED 50cc

06.12.511.31 BETA RR 50 >'16 E4 CE

06.12.521.31 SHERCO 50 SM-R/SE-R CE

06.12.530.31 DERBI SENDA '00/DRD CE

06.12.542.31 RIEJU MRT CE

€ 179,⁹⁰

E-NOX

E-NOX

The best choice for the most radical off-road mopeds fully handmade in stainless steel.



GASKET



INCLUDED

MOUNTINGKIT



INCLUDED

- New Tecnigas off-road line
- Its structure perfectly fits the dimensions from the racing off-road vehicles
- Silencer in black aluminium following the standards of the off-road vehicle design

- Stainless steel structure
- Notable improvement in performance
- Extra durability thanks to the resistance of the main material, stainless steel
- EC homologations available according to 97/24/EC directive

E-NOX STEEL

The best choice for the most radical off-road mopeds fully handmade in steel.



- Steel structure
- Its structure perfectly fits the dimensions from the racing off-road vehicles
- Silencer in black aluminium following the standards of the off-road vehicle design
- EC homologations available according to 97/24/EC directive

E-NOX

MOPED 50cc

06.12.530.16	DERBI SENDA '00/DRD RVS CE
06.12.540.16	RIEJU/MH/PEUGEOT RVS CE
06.12.541.16	MALAGUTI/YAMAHA/MH/PEUGEOT RVS CE
06.12.542.16	RIEJU MRT RVS CE

€ 229,⁹⁰

tecnigas

E-NOX STEEL

MOPED 50cc

06.12.500.01	APRILIA RX NON CE	NON CE
06.12.510.01	BETA RR RK6 NON CE	NON CE
06.12.520.21	DERBI SENDA '99 CE	
06.12.521.21	SHERCO 50 SM-R/SE-R CE	
06.12.530.21	DERBI SENDA '00/DRD CE	
06.12.540.21	RIEJU/MH/PEUGEOT CE	
06.12.541.21	MALAGUTI/YAMAHA/MH/PEUGEOT CE	
06.12.542.21	RIEJU MRT CE	
06.12.550.01	CPI SM/SC NON CE	NON CE
06.12.560.01	SUZUKI RMX/SMX NON CE	NON CE
06.12.571.21	HM CRE 50 CE	
06.12.580.01	GAS GAS NON CE	NON CE

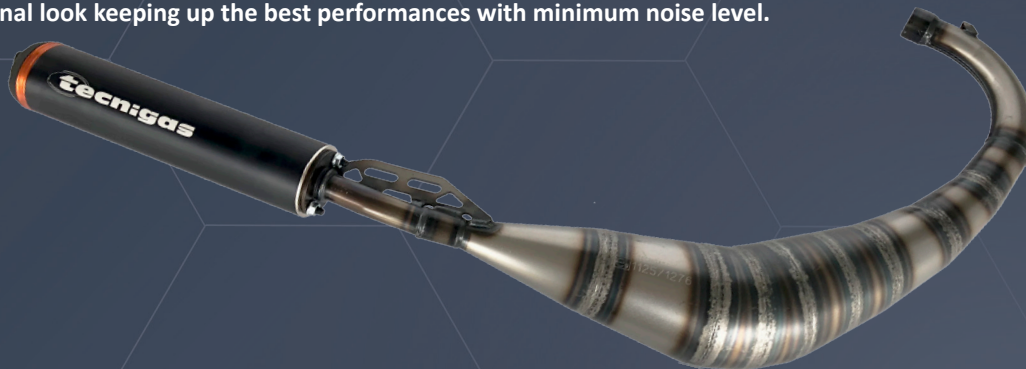
€ 154,⁹⁰

E-NOX

29

G-BOX

Original look keeping up the best performances with minimum noise level.



- Stainless Steel structure
- Low noise level
- Maximum performance as a silencer

- Resistance and durability
- Design very similar to the original
- EC homologations available according to directive 97/24/EC



GASKET



INCLUDED

MOUNTINGKIT



INCLUDED

XS

High performance features and a sporty look for the most radical riders.



- Tecnigas moped line
- AP04 Steel structure with the cone contracone principle and completely handmade welding
- Sound insulation through a resonating chamber system together with a bioxil compositum to reach maximum sound isolation.

- Silencer in anodised black aluminium
- High performance
- Resistance and durability
- Racing and hand-crafted design
- EC homologations available according to directive 97/24/EC

G-BOX

MOPED 50cc

06.16.821.27	SHERCO 50 SM-R/SE-R CE
06.16.830.27	AM6 APRILIA/RIEJU/MH CE
06.16.851.17	DERBI GPR 50>04 CE
06.16.852.27	DERBI GPR'10 / APRILIA RS50'10 CE
06.16.870.27	DERBI SENDA '00/PEU RX/MHRX/ CE

€ 264,⁹⁰

XS

MOPED 50cc

06.06.830.12	RIEJU MRT/MRX CHROOM CE
06.06.833.12	BETA TRUERBA RR/RR 50 CE
06.06.840.12	YAMAHA DT50R CHROOM CE
06.06.870.12	DERBI SENDA R00 CHROOM CE

€ 169,⁹⁰

4SCOOT EVO

Design and architecture completely renewed maintaining a perfect balance between elegance, sporty look and high performances.



GASKET



INCLUDED

MOUNTINGKIT



INCLUDED



- Silencer in AISI 304 stainless steel
- Satin finish
- Interior design adapted to the most powerful engines
- Homologation available according to Directive 97/24/EC

4SCOOT EVO



4SCOOT EVO

MAXISCOOTER 125cc

06.39.100.21	HONDA SH 125/150 CE
06.39.101.21	HONDA SHi 125 (ESP engine) CE
06.39.301.21	YAMAHA MAJESTY 250 96/00 CE
06.39.306.21	YAMAHA X-MAX 250 >04 CE
06.39.309.21	YAMAHA X-MAX 125 '10-'16 CE
06.39.402.21	SUZUKI BURGMAN 200i CE
06.39.511.21	KYMCO K-XCT 300i CE
06.39.707.21	SYM JOYMAX/GTS 300i CE
06.39.708.21	SYM GTS 300i CE
06.39.711.21	SYM JOYRIDE 200i CE

€ 384,⁹⁰

4SCOOT EVO BLACK

Design and architecture completely renewed maintaining a perfect balance between elegance, sporty look and high performances.



GASKET



INCLUDED

MOUNTINGKIT



INCLUDED



- Silencer in AISI 304 stainless steel
- Temperature high resistant black painting
- Interior design adapted to the most powerful engines
- Homologation available according to Directive 97/24/EC



4SCOOT EVO BLACK

MAXISCOOTER 125cc

06.39.100.21B	HONDA SH125/150 CBP CE
06.39.101.21B	HONDA SH125i (ESP) CBP CE
06.39.102.21B	HONDA PCX 125 (ESP) CBP CE
06.39.103.21B	HONDA SH125i/150i CBP CE
06.39.105.21B	HONDA SH300i CBP CE
06.39.106.21B	HONDA PCX 125 <12 CBP CE
06.39.301.21B	YA MAJESTY 250 96/00 CBP CE
06.39.303.21B	YA X-MAX 125 07-09 CBP CE
06.39.306.21B	YA X-MAX 250i <04 CBP CE
06.39.400.21B	SUZ BURGMAN 125/150 <07 CBP CE
06.39.401.21B	SUZ BURGMAN 125i/150i>07 CBP CE
06.39.402.21B	SUZ BURGMAN 200i CBP CE
06.39.511.21B	KYMCO K-XCT 300i CBP CE
06.39.514.21B	KYMCO SUPER DINK 300i CBP CE
06.39.707.21B	SYM JOYMAX/GTS 300i CBP CE
06.39.708.21B	SYM GTS 300i CBP CE
06.39.711.21B	KYMCO JOYRIDE 200i CBP CE
06.39.801.21B	PIA (QUASAR) LC 250-300i CBP CE
06.39.851.21B	PIAGGIO GTS 300i CBP CE

€ 384,⁹⁰

MAXI-4

Optimum performance with minimum noise level for the Maxi Scooters.



GASKET



INCLUDED

MOUNTINGKIT



INCLUDED



- Stainless Steel structure
- Low noise level
- Maximum performance as a silencer
- Resistance and durability
- Design very similar to the original
- EC homologations available according to directive 97/24/EC

MAXI-4

MAXISCOOTER 125

03.37.010.11	CHINESE 4T 125cc CE
03.37.020.11	CHINESE COOLTRA CITY 4T 125
03.37.103.11	HONDA SH/SHi 125/150cc CE
03.37.104.11	HONDA PANTHEON 125 CE
03.37.106.11	HONDA PCX 125cc <12 CE
03.37.107.11	HONDA VISION 110cc CE
03.37.175.11	HONDA LEAD 100cc CE
03.37.202.11	PEUGEOT ELYSTAR 125cc CE
03.37.300.11	YAMAHA MAJESTY 125 CE
03.37.302.11	YAMAHA CYGNUS 125 CE 10
03.37.307.11	YAMAHA CYGNUS X 125cc CE
03.37.308.11	YAMAHA N-MAX 125 <2018 CE
03.37.500.11	KYMCO PEOPLE 125 trommel rem CE
03.37.506.11	KYMCO AGILITY 125 CE
03.37.507.11	KYMCO AGILITY CITY 125 CE
03.37.508.11	KYMCO LIKE 4T 125 schijfrem CE
03.37.515.11	KYMCO AGILITY CITY 125i>16 CE
03.37.600.11	DAELIM NS2 125 CE
03.37.703.11	SYM SYMPHONY 125cc CE
03.37.712.11	SYM SYMPHONY 125i >16 CE
03.37.804.11	PIAGGIO LIBERTY 200cc CE
03.37.850.11	PIAGGIO LX 3V 125cc CE
03.37.852.11	LX/ET4 2V AC99-05 125/150 CE

€ 149,⁹⁰

MAXI-4N

Original look keeping up the best performances with minimum noise level.



GASKET



INCLUDED

MOUNTINGKIT



INCLUDED



- Stainless Steel structure
- Low noise level
- Maximum performance as a silencer
- Resistance and durability
- Design very similar to the original
- EC homologations available according to directive 97/24/EC

MAXI-4N

MAXI-4N

MAXISCOOTER 125

03.37.100.21	HONDA SH 125/150 CE
03.37.101.21	HONDA SHi/SPX 125 CE zonder lambda
03.37.103.21	HONDA SHi125/150 CE met lambda
03.37.105.21	HONDA SHi300 CE
03.37.200.21	PEUGEOT GEOPOLIS 125cc CE
03.37.301.21	YAMAHA MAJESTY 96-00 250 DX CE
03.37.303.21	YAMAHA X-MAX 125cc 07-09 CE
03.37.305.21	YAMAHA X-ENTER 125/150 CE
03.37.306.21	YAMAHA X-MAX 250 >04 CE
03.37.309.21	YAMAHA X-MAX 125 '10-'16 CE
03.37.400.21	SUZUKI BURGMAN <07 125cc CE
03.37.401.21	SUZUKI BURGMAN07 125i CE
03.37.402.21	SUZUKI BURGMAN 200i CE
03.37.509.21	KYMCO SUPER DINK 125i CE

MAXISCOOTER 125

03.37.512.21	KYMCO GRAND DINK >07 125 CE
03.37.513.21	KYMCO PEOPLE GTI 125 CE
03.37.514.21	KYMCO SUPER DINK 300i CE
03.37.705.21	SYM JOYMAX GTSi 125 CE
03.37.706.21	SYM GTS 125cc 2005-2010 CE
03.37.708.21	SYM GTS 300i EVO CE
03.37.710.21	SYM GTS 125icc EVO CE
03.37.711.21	SYM JOYRIDE 200icc EVO CE
03.37.800.21	PIAGGIO 125/150/200 CE
03.37.801.21	PIAGGIO 250/300 CE
03.37.802.21	PIAGGIO X8 125/200 CE
03.37.803.21	APRILIA ATLANTIC 125S CE
03.37.805.21	PIAGGIO EVOLUTION 05 CE
03.37.851.21	PIAGGIO GTS 300i CE

 **349,⁹⁰**

4SCOOT

Perfect balance between top performances and low noise level with stainless steel heart dressed up in aluminium.



GASKET



INCLUDED

MOUNTINGKIT



INCLUDED



- Manufactured in ANSI 304 Stainless Steel
- Outer in 6063 Aluminium
- Optimised to get the best of every 4 stroke engine



4SCOOT

MAXISCOOTER 125

06.39.100.11	HONDA SH 125/150 CE
06.39.101.11	HONDA SHi 125 CE
06.39.102.11	HONDA PCX 125 CE
06.39.103.11	HONDA SHi 125/150 CE
06.39.106.11	HONDA PCX 125cc <12 CE
06.39.200.11	PEUGEOT GEOPOLIS 125 CE
06.39.304.11	YAMAHA BW'S 125 CE
06.39.305.11	YAMAHA X-ENTER 125/150 CE
06.39.307.11	YAMAHA CYGNUS X 125cc CE
06.39.308.11	YAMAHA N-MAX 125 <2018 CE
06.39.400.11	SUZUKI BURGMAN <07 125cc CE
06.39.401.11	SUZUKI BURGMAN >07 125i CE
06.39.500.11	KYMCO PEOPLE S TROMMELREM 125 CE
06.39.507.11	KYMCO AGILITY CITY/16 PEOP125/150 CE
06.39.508.11	KYMCO LIKE REMSCHIIF 125cc CE
06.39.509.11	KYMCO DOWN TOWN 125i CE
06.39.510.11	KYMCO K-XCT 125i CE

MAXISCOOTER 125

06.39.512.11	KYMCO GRAND DINK >07 125 CE
06.39.515.11	KYMCO AGILITY CITY 125i/150i >16 CE
06.39.702.11	SYM SYMPLY 125 CE
06.39.703.11	SYM SYMPHONY REMSCHIIF 125 CE
06.39.704.11	SYM JET 4 125 CE
06.39.705.11	SYM JOYMAX GTS 125 CE
06.39.706.11	SYM GTS 125cc 05-10 CE
03.39.708.11	KYMCO PEOPLE GTI 125 CE
06.39.709.11	SYM JOYMAX GTS 125i CE
06.39.710.11	SYM GTS EVO 125i CE
06.39.712.11	SYM SYMPHONY 125i >16 (eur4) CE
06.39.800.11	PIAGGIO QUASAR MOTOR LC 125-200 CE
06.39.802.11	PIA X8 125/200 APR ATLANTIC 125S CE
06.39.804.11	PIAGGIO LEADER AC 125 CE
06.39.805.11	PIAGGIO X9 EVOLUTION 05 CE
06.39.806.11	PIAGGIO LIBERTY 125 3V CE

€ 299,⁹⁰

PX 200

Maximum balance between performance, resistance and price.

NON CE



PX 200 / QUAD

QUAD

Hydro formed exhaust pipe system designed for competition use.



PX 200

2T SCOOTER 50cc

03.07.048 VESPA PX200 ZWART

03.07.048.02 VESPA PX200 CHROOM

€109,⁹⁰

€ 69,⁹⁰

QUAD

QUADDER

06.15.752.02 UNILLI ADLY 05

06.15.757.02 UNILLI AEON

06.15.758.02 ADLY E-TON

06.15.759.02 KYMCO MXE R

€219,⁹⁰

€ 231,⁹⁰

ORIGINAL-PRO

03.07.504 KYMCO MXU 50 REVERSE

€ 199,⁹⁰

SCOOTER 50_{cc} - 125_{cc} 2T



Merk / Model	Silent-Pro	Next-R	Next-R Chromo	Q-tre	Q-tre Chromo	Triops	Original-Pro
ADLY							
Airtech 50	03.07.383.11	06.09.383RCE	06.09.383RCECR	06.08.383.11	06.08.383.12	06.10.383.31	
Cat 50	03.07.383.11	06.09.383RCE	06.09.383RCECR	06.08.383.11	06.08.383.12	06.10.383.31	
Fox Plus 50	03.07.300.11	06.09.300RCE					
GTA 50	03.07.383.11	06.09.383RCE	06.09.383RCECR	06.08.383.11	06.08.383.12	06.10.383.31	
GTC 50	03.07.383.11	06.09.383RCE	06.09.383RCECR	06.08.383.11	06.08.383.12	06.10.383.31	
Jet 50	03.07.383.11	06.09.383RCE	06.09.383RCECR	06.08.383.11	06.08.383.12	06.10.383.31	
Noble 50	03.07.383.11	06.09.383RCE	06.09.383RCECR	06.08.383.11	06.08.383.12	06.10.383.31	
Panther 50	03.07.383.11	06.09.383RCE	06.09.383RCECR	06.08.383.11	06.08.383.12	06.10.383.31	
Silver Fox 50	03.07.383.11	06.09.383RCE	06.09.383RCECR	06.08.383.11	06.08.383.12	06.10.383.31	
Supersonic 50	03.07.383.11	06.09.383RCE	06.09.383RCECR	06.08.383.11	06.08.383.12	06.10.383.31	
Thunderbike 50	03.07.383.11	06.09.383RCE	06.09.383RCECR	06.08.383.11	06.08.383.12	06.10.383.31	
Alunix							
Alunix 50	03.07.375.11	06.09.375RCE	06.09.375RCECR	06.08.375.11	06.08.375.12	06.10.175.31	
APRILIA							
Amico 50	03.07.376.11	06.09.376RCE	06.09.376RCECR	06.08.376.11	06.08.376.12		
Gulliver 50	03.07.375.11	06.09.375RCE	06.09.375RCECR	06.08.375.11	06.08.375.12	06.10.175.31	
Habana 50 (Morini Engine)	03.08.365						
Habana 50 (Piaggio Engine)	03.07.053.11						
Mojito 50 (Morini Engine)	03.08.365						
Mojito 50 (Piaggio Engine)	03.07.053.11						
Rally	03.07.375.11	06.09.375RCE	06.09.375RCECR	06.08.375.11	06.08.375.12	06.10.175.31	
Scarabeo 50 (Minarelli Engine)	03.07.375.11	06.09.375RCE	06.09.375RCECR	06.08.375.11	06.08.375.12	06.10.175.31	
Scarabeo 50 (Morini Engine)	03.07.363.11	06.09.379RCE	06.09.379RCECR				
Scarabeo 50 Di-tech	03.07.366						
Sonic 50	03.07.375.11	06.09.375RCE	06.09.375RCECR	06.08.375.11	06.08.375.12	06.10.175.31	
Sportcity One 50 2T	03.07.040.11	06.09.040RCE	06.09.040RCECR	06.08.040.11	06.08.040.12	06.10.140.31	
SR '00 50 (Morini Engine)	03.07.363.11	06.09.379RCE	06.09.379RCECR				
SR '04 50 (Piaggio Engine)	03.07.040.11	06.09.040RCE	06.09.040RCECR	06.08.040.11	06.08.040.12	06.10.140.31	
SR 50 <'94 (Minarelli Vert.)	03.07.376.11	06.09.376RCE	06.09.376RCECR	06.08.376.11	06.08.376.12		
SR 50 >'94 (Minarelli Horiz.)	03.07.375.11	06.09.375RCE	06.09.375RCECR	06.08.375.11	06.08.375.12	06.10.103.30	
SR Di-tech 50	03.07.366						

SCOOTER 50_{cc} - 125_{cc} 2T



Merk / Model	Silent-Pro	Next-R	Next-R Chroom	Q-tre	Q-tre Chroom	Triops	Original-Pro
SR Factory 50	03.07.040.11	06.09.040RCE	06.09.040RCECR	06.08.040.11	06.08.040.12	06.10.140.31	

BENELLI

491 RR 50 (Minarelli Engine)	03.07.375.11	06.09.375RCE	06.09.375RCECR	06.08.375.11	06.08.375.12	06.10.175.31	
491 RR 50 (Morini Engine)	03.07.181	06.09.181R	06.09.181RCR				
491 50 Strada	03.07.375.11	06.09.375RCE	06.09.375RCECR	06.08.375.11	06.08.375.12	06.10.175.31	
K2 50	03.07.375.11	06.09.375RCE	06.09.375RCECR	06.08.375.11	06.08.375.12	06.10.175.31	
Namur 50	03.07.375.11	06.09.375RCE	06.09.375RCECR	06.08.375.11	06.08.375.12	06.10.175.31	
Pepe 50	03.07.375.11	06.09.375RCE	06.09.375RCECR	06.08.375.11	06.08.375.12	06.10.175.31	
Pepe LX 50	03.07.375.11	06.09.375RCE	06.09.375RCECR	06.08.375.11	06.08.375.12	06.10.175.31	
Quattro Nove X 50	03.07.375.11	06.09.375RCE	06.09.375RCECR	06.08.375.11	06.08.375.12	06.10.175.31	

BETA

ARK 50	03.07.375.11	06.09.375RCE	06.09.375RCECR	06.08.375.11	06.08.375.12	06.10.175.31	
Chrono/Ch 502 50	03.07.375.11	06.09.375RCE	06.09.375RCECR	06.08.375.11	06.08.375.12	06.10.175.31	
Eikon 50	03.07.375.11	06.09.375RCE	06.09.375RCECR	06.08.375.11	06.08.375.12	06.10.175.31	
Quadra 50	03.07.375.11	06.09.375RCE	06.09.375RCECR	06.08.375.11	06.08.375.12	06.10.175.31	
Tempo 50 13-16	03.07.375.11	06.09.375RCE	06.09.375RCECR	06.08.375.11	06.08.375.12	06.10.175.31	

CAGIVA

Progress 50	03.07.066	06.09.066R	06.09.066RCR				
-------------	-----------	------------	--------------	--	--	--	--

CPI

Aragon 50	03.07.383.11	06.09.383RCE	06.09.383RCECR	06.08.383.11	06.08.383.12	06.10.383.31	
Aragon GP 50	03.07.383.11	06.09.383RCE	06.09.383RCECR	06.08.383.11	06.08.383.12	06.10.383.31	
Bravo 50	03.07.383.11	06.09.383RCE	06.09.383RCECR	06.08.383.11	06.08.383.12	06.10.383.31	
Formula R 50	03.07.383.11	06.09.383RCE	06.09.383RCECR	06.08.383.11	06.08.383.12	06.10.383.31	
Freaky 50	03.07.383.11	06.09.383RCE	06.09.383RCECR	06.08.383.11	06.08.383.12	06.10.383.31	
GTR 50 50		06.09.384RCE	06.09.384RCECR				
Hussar EUR-1 50	03.07.381.11	06.09.381RCE					
Hussar EUR-2 50	03.07.383.11	06.09.383RCE	06.09.383RCECR	06.08.383.11	06.08.383.12	06.10.383.31	
Oliver City 50	03.07.383.11	06.09.383RCE	06.09.383RCECR	06.08.383.11	06.08.383.12	06.10.383.31	
Oliver EUR-1 50	03.07.381.11	06.09.381RCE					
Oliver 50 EUR-2	03.07.383.11	06.09.383RCE	06.09.383RCECR	06.08.383.11	06.08.383.12	06.10.383.31	
Oliver Sport 50	03.07.383.11	06.09.383RCE	06.09.383RCECR	06.08.383.11	06.08.383.12	06.10.383.31	
Popcorn 50 EUR-1	03.07.381.11	06.09.381RCE					

SCOOTER 50_{cc} - 125_{cc} 2T



Merk / Model	Silent-Pro	Next-R	Next-R Chroom	Q-tre	Q-tre Chroom	Triops	Original-Pro
Popcorn 50 EUR-2	03.07.383.11	06.09.383RCE	06.09.383RCECR	06.08.383.11	06.08.383.12	06.10.383.31	
Tracker 50	03.07.381.11	06.09.381RCE					
CST							
B09 50	03.07.381.11	06.09.381RCE					
DAELIM							
Bonita 50	03.07.161.11	06.09.161R	06.09.161RCR				
Cordi 50	03.07.161.11	06.09.161R	06.09.161RCR				
E-Five 50	03.07.164	06.09.164R					
Message 50	03.07.161.11	06.09.161R	06.09.161RCR				
S-Five 50	03.07.164	06.09.164R					
DERBI							
Atlantis 50 (Derbi Engine)	03.07.066	06.09.066R	06.09.066RCR			06.10.140.31	
Atlantis 50 (Piaggio Engine)	03.07.040.11	06.09.040RCE	06.09.040RCECR	06.08.040.11	06.08.040.12		
Boulevard 50	03.07.040.11	06.09.040RCE	06.09.040RCECR	06.08.040.11	06.08.040.12		
Easy 50	03.07.375.11	06.09.375RCE	06.09.375RCECR	06.08.375.11	06.08.375.12	06.10.175.31	
GP1 50 2T	03.07.040.11	06.09.040RCE	06.09.040RCECR	06.08.040.11	06.08.040.12	06.10.140.31	
Hunter 50	03.07.066	06.09.066R	06.09.066RCR				
Manhattan 50	03.07.066	06.09.066R	06.09.066RCR				
Paddock 50	03.07.066	06.09.066R	06.09.066RCR				
Predator 50 (Air)	03.07.066	06.09.066R	06.09.066RCR				
Predator 50 (H2O)		06.09.067R	06.09.067RCR				
Sonar 50	03.07.040.11	06.09.040RCE	06.09.040RCECR	06.08.040.11	06.08.040.12	06.10.140.31	
Vamos 50 (Morini Engine)	03.07.360.11	06.09.360R					
Variant Sport 50	03.07.040.11	06.09.040RCE	06.09.040RCECR	06.08.040.11	06.08.040.12	06.10.140.31	
E-TON							
Beamer 50	03.07.380	06.09.380R	06.09.380RCR				
Matrix 50	03.07.380	06.09.380R	06.09.380RCR				
Sport 50	03.07.380	06.09.380R	06.09.380RCR				
GARELLI							
GPS 50	03.07.383.11	06.09.383RCE	06.09.383RCECR	06.08.383.11	06.08.383.12	06.10.383.31	
Tiesse 50R	03.07.383.11	06.09.383RCE	06.09.383RCECR	06.08.383.11	06.08.383.12	06.10.383.31	
Xò 50 2T	03.07.383.11	06.09.383RCE	06.09.383RCECR	06.08.383.11	06.08.383.12	06.10.383.31	

SCOOTER 50_{cc} - 125_{cc} 2T



Merk / Model	Silent-Pro	Next-R	Next-R Chrom	Q-tre	Q-tre Chrom	Triops	Original-Pro
--------------	------------	--------	--------------	-------	-------------	--------	--------------

GENERIC

B05 50	03.07.383.11	06.09.383RCE	06.09.383RCECR	06.08.383.11	06.08.383.12	06.10.383.31	
Cracker 50	03.07.383.11	06.09.383RCE	06.09.383RCECR	06.08.383.11	06.08.383.12	06.10.383.31	
Epico 50	03.07.383.11	06.09.383RCE	06.09.383RCECR	06.08.383.11	06.08.383.12	06.10.383.31	
Ideo 50	03.07.383.11	06.09.383RCE	06.09.383RCECR	06.08.383.11	06.08.383.12	06.10.383.31	
Jump 50	03.07.383.11	06.09.383RCE	06.09.383RCECR	06.08.383.11	06.08.383.12	06.10.383.31	
Onyx 50	03.07.383.11	06.09.383RCE	06.09.383RCECR	06.08.383.11	06.08.383.12	06.10.383.31	
Race 50	03.07.383.11	06.09.383RCE	06.09.383RCECR	06.08.383.11	06.08.383.12	06.10.383.31	
Roc 50	03.07.383.11	06.09.383RCE	06.09.383RCECR	06.08.383.11	06.08.383.12	06.10.383.31	
Sirion 50	03.07.383.11	06.09.383RCE	06.09.383RCECR	06.08.383.11	06.08.383.12	06.10.383.31	
Spin GE 50	03.07.383.11	06.09.383RCE	06.09.383RCECR	06.08.383.11	06.08.383.12	06.10.383.31	
Toxic 50	03.07.383.11	06.09.383RCE	06.09.383RCECR	06.08.383.11	06.08.383.12	06.10.383.31	
XOR 50	03.07.383.11	06.09.383RCE	06.09.383RCECR	06.08.383.11	06.08.383.12	06.10.383.31	

GENUINE

Buddy 50	03.07.375.11	06.09.375RCE	06.09.375RCECR	06.08.375.11	06.08.375.12	06.10.175.31	
Roughhouse R50	03.07.375.11	06.09.375RCE	06.09.375RCECR	06.08.375.11	06.08.375.12	06.10.175.31	

GILERA

DNA 50	03.07.040.11	06.09.040RCE	06.09.040RCECR	06.08.040.11	06.08.040.12	06.10.140.31	
Easy Moving 50	03.07.040.11	06.09.040RCE	06.09.040RCECR	06.08.040.11	06.08.040.12	06.10.140.31	
Ice 50	03.07.040.11	06.09.040RCE	06.09.040RCECR	06.08.040.11	06.08.040.12	06.10.140.31	
Runner 50	03.07.040.11	06.09.040RCE	06.09.040RCECR	06.08.040.11	06.08.040.12	06.10.140.31	
Stalker 50	03.07.040.11	06.09.040RCE	06.09.040RCECR	06.08.040.11	06.08.040.12	06.10.140.31	
Typhoon 50	03.07.040.11	06.09.040RCE	06.09.040RCECR	06.08.040.11	06.08.040.12	06.10.140.31	

HONDA

Bali 50	03.07.163.11						
Bali 100	03.07.171						
Dio 50	03.07.161.11	06.09.161R	06.09.161RCR				
Dio 100 AF35		06.09.174R					
Elite 50 SR	03.07.161.11	06.09.161R	06.09.161RCR				
SA 50 Vision	03.07.166						
Scoopy 75cc	03.07.160.11						
SFX 50	03.07.163.11	06.09.163R	06.09.163RCR				

SCOOTER 50_{cc} - 125_{cc} 2T



Merk / Model	Silent-Pro	Next-R	Next-R Chromo	Q-tre	Q-tre Chromo	Triops	Original-Pro
SH 50 >'96	03.07.169.11	06.09.169R					
SH 100 >'96	03.07.167.11						
SH 50 Scoopy <'96	03.07.162						
Sky 50	03.07.173	06.09.173R					
Wallaroo 50		06.09.172CE	06.09.172.92				
X8R 50	03.07.173	06.09.173R					
HYOSUNG							
Prima 50	03.07.182	06.09.182R					
Rally 50	03.07.182	06.09.182R					
Rush 50	03.07.180	06.09.180R					
Rush 50 25 Km/h	03.07.183						
Sense 50	03.07.180	06.09.180R					
SF 50 Super Fast	03.07.182	06.09.182R					
Super Cab 50	03.07.180	06.09.180R					
Super Cab 50 >'08	03.07.182	06.09.182R					
ITALJET							
Ascot 50	03.07.377						
Bazooka 50	03.07.377						
Cruise 50	03.07.180	06.09.180R					
Dragster 50	03.07.375.11	06.09.375RCE	06.09.375RCECR	06.08.375.11	06.08.375.12	06.10.175.31	
Formula 50 (Minarelli Horiz.)	03.07.375.11	06.09.375RCE	06.09.375RCECR	06.08.375.11	06.08.375.12	06.10.175.31	
Formula 50 (Morini Engine)	03.07.181	06.09.181R	06.09.181RCR				
Jet Set 50	03.07.040.11	06.09.040RCE	06.09.040RCECR	06.08.040.11	06.08.040.12	06.10.140.31	
Pista 50	03.07.376.11	06.09.376RCE	06.09.376RCECR	06.08.376.11	06.08.376.12		
Scoop 50	03.07.376.11	06.09.376RCE	06.09.376RCECR	06.08.376.11	06.08.376.12		
Torpedo 50 (Piaggio Engine)	03.07.040.11	06.09.040RCE	06.09.040RCECR	06.08.040.11	06.08.040.12	06.10.140.31	
Yankee 50	03.07.376.11	06.09.376RCE	06.09.376RCECR	06.08.376.11	06.08.376.12		
KEEWAY							
F-Act 50 (drum brake)	03.07.383.11	06.09.383RCE	06.09.383RCECR	06.08.383.11	06.08.383.12	06.10.383.31	
Flash 50	03.07.383.11	06.09.383RCE	06.09.383RCECR	06.08.383.11	06.08.383.12	06.10.383.31	
Focus 50	03.07.383.11	06.09.383RCE	06.09.383RCECR	06.08.383.11	06.08.383.12	06.10.383.31	
Gocchia 50	03.07.383.11	06.09.383RCE	06.09.383RCECR	06.08.383.11	06.08.383.12	06.10.383.31	

SCOOTER 50_{cc} - 125_{cc} 2T



Merk / Model	Silent-Pro	Next-R	Next-R Chroom	Q-tre	Q-tre Chroom	Triops	Original-Pro
Hacker 50	03.07.383.11	06.09.383RCE	06.09.383RCECR	06.08.383.11	06.08.383.12	06.10.383.31	
Matrix 50	03.07.383.11	06.09.383RCE	06.09.383RCECR	06.08.383.11	06.08.383.12	06.10.383.31	
RY6 50	03.07.383.11	06.09.383RCE	06.09.383RCECR	06.08.383.11	06.08.383.12	06.10.383.31	
RY8 50	03.07.383.11	06.09.383RCE	06.09.383RCECR	06.08.383.11	06.08.383.12	06.10.383.31	

KYMCO

Agility 50	03.07.503.11	06.09.503R	06.09.503RCR	06.08.503	06.08.503.20	06.10.103.30	
Bet & Win 50	03.07.503.11	06.09.503R	06.09.503RCR	06.08.503	06.08.503.20	06.10.103.30	
Cobra 50	03.07.503.11	06.09.503R	06.09.503RCR	06.08.503	06.08.503.20	06.10.103.30	
CXS Curio 50	03.07.161.11	06.09.161R	06.09.161RCR				
Dink 50	03.07.503.11	06.09.503R	06.09.503RCR	06.08.503	06.08.503.20	06.10.103.30	
DJ World 50	03.07.161.11	06.09.161R	06.09.161RCR				
DJR 50	03.07.161.11	06.09.161R	06.09.161RCR				
Fever ZX 50	03.07.161.11	06.09.161R	06.09.161RCR				
Grand Dink 50	03.07.503.11	06.09.503R	06.09.503RCR	06.08.503	06.08.503.20	06.10.103.30	
Heroism 50	03.07.503.11	06.09.503R	06.09.503RCR	06.08.503	06.08.503.20	06.10.103.30	
K-12 50	03.07.161.11	06.09.161R	06.09.161RCR				
KB 50	03.07.161.11	06.09.161R	06.09.161RCR				
Like 50 2T	03.07.503.11	06.09.503R	06.09.503RCR	06.08.503	06.08.503.20	06.10.103.30	
New Dink 50	03.07.503.11	06.09.505RCE	06.09.505RCECR				
People 50 2T	03.07.503.11	06.09.503R	06.09.503RCR	06.08.503	06.08.503.20	06.10.103.30	
Scout 50	03.07.161.11	06.09.161R	06.09.161RCR				
Snipper 50	03.07.503.11	06.09.503R	06.09.503RCR	06.08.503	06.08.503.20	06.10.103.30	
Spacer 50	03.07.503.11	06.09.503R	06.09.503RCR	06.08.503	06.08.503.20	06.10.103.30	
Super 8 50 2T	03.07.503.11	06.09.503R	06.09.503RCR	06.08.503	06.08.503.20	06.10.103.30	
Super 9 50	03.07.503.11	06.09.503R	06.09.503RCR	06.08.503	06.08.503.20	06.10.103.30	
Top Boy 50	03.07.503.11	06.09.503R	06.09.503RCR	06.08.503	06.08.503.20	06.10.103.30	
Vitality 50 2T	03.07.503.11	06.09.503R	06.09.503RCR	06.08.503	06.08.503.20	06.10.103.30	
Yager 50	03.07.503.11	06.09.503R	06.09.503RCR	06.08.503	06.08.503.20	06.10.103.30	
Yup 50	03.07.503.11	06.09.503R	06.09.503RCR	06.08.503	06.08.503.20	06.10.103.30	
ZX 50	03.07.161.11	06.09.161R	06.09.161RCR				

MALAGUTI

Ciak 50	03.07.375.11	06.09.375RCE	06.09.375RCECR	06.08.375.11	06.08.375.12	06.10.175.31	
---------	--------------	--------------	----------------	--------------	--------------	--------------	--

SCOOTER 50_{cc} - 125_{cc} 2T



Merk / Model	Silent-Pro	Next-R	Next-R Chromo	Q-tre	Q-tre Chromo	Triops	Original-Pro
F10 Jetline 50	03.07.375.11	06.09.375RCE	06.09.375RCECR	06.08.375.11	06.08.375.12	06.10.175.31	
F12 Phantom 50	03.07.375.11	06.09.375RCE	06.09.375RCECR	06.08.375.11	06.08.375.12	06.10.175.31	
F15 Firefox 50	03.07.375.11	06.09.375RCE	06.09.375RCECR	06.08.375.11	06.08.375.12	06.10.175.31	
Yesterday 50	03.07.375.11	06.09.375RCE	06.09.375RCECR	06.08.375.11	06.08.375.12	06.10.175.31	
MBK							
Booster 50	03.07.376.11	06.09.376RCE	06.09.376RCECR	06.08.376.11	06.08.376.12		
Evolis 50-80	03.07.375.11	06.09.375RCE	06.09.375RCECR	06.08.375.11	06.08.375.12	06.10.175.31	
Fizz 50	03.07.375.11	06.09.375RCE	06.09.375RCECR	06.08.375.11	06.08.375.12	06.10.175.31	
Flipper 50	03.07.375.11	06.09.375RCE	06.09.375RCECR	06.08.375.11	06.08.375.12	06.10.175.31	
Forte 50	03.07.375.11	06.09.375RCE	06.09.375RCECR	06.08.375.11	06.08.375.12	06.10.175.31	
MachG 50	03.07.375.11	06.09.375RCE	06.09.375RCECR	06.08.375.11	06.08.375.12	06.10.175.31	
Nitro 50	03.07.375.11	06.09.375RCE	06.09.375RCECR			06.10.175.31	
Nitro 100	03.07.380		06.09.380RCR				
Ovetto 50	03.07.375.11	06.09.375RCE	06.09.375RCECR	06.08.375.11	06.08.375.12	06.10.175.31	
Ovetto 100	03.07.380		06.09.380RCR				
Stunt 50	03.07.375.11	06.09.375RCE	06.09.375RCECR	06.08.375.11	06.08.375.12	06.10.175.31	
MZ							
Moskito RX 50	03.07.375.11	06.09.375RCE	06.09.375RCECR	06.08.375.11	06.08.375.12	06.10.175.31	
NECO							
GPX 50	03.07.383.11	06.09.383RCE	06.09.383RCECR	06.08.383.11	06.08.383.12	06.10.383.31	
PEGASUS							
Corona 50	03.07.363.11	06.09.379RCE	06.09.379RCECR				
PEUGEOT							
Blaster 50	03.07.250.11	06.09.250RCE	06.09.250RCECR	06.08.250.11	06.08.250.12	06.10.250.31	
Buxy 50 <'98	03.07.241.11	06.09.241RCE					
Buxy 50 >'98	03.07.242.11	06.09.242RCE	06.09.242RCECR	06.08.242.11	06.08.242.12	06.10.142.31	
City Star 50	03.07.252.11	06.09.250RCE	06.09.250RCECR	06.08.250.11	06.08.250.12	06.10.250.31	
Elyseo 50	03.07.242.11	06.09.242RCE	06.09.242RCECR	06.08.242.11	06.08.242.12	06.10.142.31	
Elyseo 100		06.09.243R					
Elystar 50	03.07.242.11	06.09.242RCE	06.09.242RCECR	06.08.242.11	06.08.242.12	06.10.142.31	
Fox 50		06.09.172CE	06.09.172.92				
Jet Force 50	03.07.250.11	06.09.250RCE	06.09.250RCECR	06.08.250.11	06.08.250.12	06.10.250.31	

SCOOTER 50_{cc} - 125_{cc} 2T



Merk / Model	Silent-Pro	Next-R	Next-R Chroom	Q-tre	Q-tre Chroom	Triops	Original-Pro
Kisbee 50	03.07.250.11	06.09.250RCE	06.09.250RCECR	06.08.250.11	06.08.250.12	06.10.250.31	
Looxor 50	03.07.242.11	06.09.242RCE	06.09.242RCECR	06.08.242.11	06.08.242.12	06.10.142.31	
Ludix 50	03.07.250.11	06.09.250RCE	06.09.250RCECR	06.08.250.11	06.08.250.12	06.10.250.31	
Ludix 50 25 Km/h	03.07.251						
Speedake 50 < '98	03.07.241.11	06.09.241RCE					
Speedfight 1 50	03.07.242.11	06.09.242RCE	06.09.242RCECR	06.08.242.11	06.08.242.12	06.10.142.31	
Speedfight 2 50	03.07.242.11	06.09.242RCE	06.09.242RCECR	06.08.242.11	06.08.242.12	06.10.142.31	
Speedfight 3 50 2T	03.07.250.11	06.09.250RCE	06.09.250RCECR	06.08.250.11	06.08.250.12	06.10.250.31	
Speedfight 100		06.09.243R					
Squab 50	03.07.242.11	06.09.242RCE	06.09.242RCECR	06.08.242.11	06.08.242.12	06.10.142.31	
ST 50 Rapido 50	03.07.166						
SV 50 Géó	03.07.240						
SV 80	03.07.243						
SV 125 geo	03.07.244						
TKR	03.07.242.11	06.09.242RCE	06.09.242RCECR	06.08.242.11	06.08.242.12	06.10.142.31	
Trekker 50	03.07.242.11	06.09.242RCE	06.09.242RCECR	06.08.242.11	06.08.242.12	06.10.142.31	
Vivacity 50 25 Km/h Vert.Engine	03.07.247						
Vivacity 2 50 2T Vert.Engine	03.07.242.11	06.09.242RCE	06.09.242RCECR	06.08.242.11	06.08.242.12	06.10.142.31	
Vivacity 3 50 2T Horz.Engine	03.07.252.11	06.09.250RCE	06.09.250RCECR	06.08.250.11	06.08.250.12	06.10.250.31	
Vivacity 100cc		06.09.243R					
Zenith 50 <'98	03.07.241.11	06.09.241RCE					
Zenith 50 >'98	03.07.242.11	06.09.242RCE	06.09.242RCECR	06.08.242.11	06.08.242.12	06.10.142.31	

PGO

Big Max 50	03.07.300.11	06.09.300RCE					
BuBu 50	03.07.300.11	06.09.300RCE					
Comet 50	03.07.301						
G-Max 50	03.07.300.11	06.09.300RCE					
Galaxy 50	03.07.301						
Hot 50	03.07.300.11	06.09.300RCE					
Mega 50	03.07.301						
PMX 50	03.07.300.11	06.09.300RCE					
Ps 50	03.07.300.11	06.09.300RCE					

SCOOTER 50_{cc} - 125_{cc} 2T



Merk / Model	Silent-Pro	Next-R	Next-R Chromo	Q-tre	Q-tre Chromo	Triops	Original-Pro
Rodoshow 50	03.07.300.11	06.09.300RCE					
T-Rex 50	03.07.300.11	06.09.300RCE					
Tornado	03.07.300.11	06.09.300RCE					

PIAGGIO

Diesis 50	03.07.040.11	06.09.040RCE	06.09.040RCECR	06.08.040.11	06.08.040.12	06.10.140.31	
Extreme 50	03.07.040.11	06.09.040RCE	06.09.040RCECR	06.08.040.11	06.08.040.12	06.10.140.31	
Fly 50 2T	03.07.040.11	06.09.040RCE	06.09.040RCECR	06.08.040.11	06.08.040.12	06.10.140.31	03.27.053.11
Free 50	03.07.040.11	06.09.040RCE	06.09.040RCECR	06.08.040.11	06.08.040.12	06.10.140.31	
Liberty 50 2T	03.07.040.11	06.09.040RCE	06.09.040RCECR	06.08.040.11	06.08.040.12	06.10.140.31	03.27.053.11
mc2 50	03.07.040.11	06.09.040RCE	06.09.040RCECR	06.08.040.11	06.08.040.12	06.10.140.31	
mc3 50	03.07.040.11	06.09.040RCE	06.09.040RCECR	06.08.040.11	06.08.040.12	06.10.140.31	
NRG 50	03.07.040.11	06.09.040RCE	06.09.040RCECR	06.08.040.11	06.08.040.12	06.10.140.31	
NTT 50	03.07.040.11	06.09.040RCE	06.09.040RCECR	06.08.040.11	06.08.040.12	06.10.140.31	
Quartz 50	03.07.040.11	06.09.040RCE	06.09.040RCECR	06.08.040.11	06.08.040.12	06.10.140.31	
Sfera 50	03.07.053.11						03.27.053.11
Sfera 80	03.07.044						
Storm 50	03.07.040.11	06.09.040RCE	06.09.040RCECR	06.08.040.11	06.08.040.12	06.10.140.31	
TPH 50	03.07.040.11	06.09.040RCE	06.09.040RCECR	06.08.040.11	06.08.040.12	06.10.140.31	
Typhoon 50	03.07.040.11	06.09.040RCE	06.09.040RCECR	06.08.040.11	06.08.040.12	06.10.140.31	
Typhoon 80	03.07.044						
Vespa ET2 50	03.07.053.11						03.27.053.11
Vespa LX 50 2T	03.07.053.11LX						03.27.053.11
Vespa LX 50 2T toering	03.07.053.11LX						03.27.053.11
Vespa S 50 2T	03.07.053.11LX						03.27.053.11
Vespa Sprint 50 2T	03.07.053.11LX						03.27.053.11
Zip 50 25 Km/h	03.07.040.11	06.09.040RCE	06.09.040RCECR	06.08.040.11	06.08.040.12	06.10.140.31	
Zip 50 2T	03.07.040.11	06.09.040RCE	06.09.040RCECR	06.08.040.11	06.08.040.12	06.10.140.31	
Zip Fast Rider 50	03.07.040.11	06.09.040RCE	06.09.040RCECR	06.08.040.11	06.08.040.12	06.10.140.31	

PUCH

Maxi 50		06.09.400R	06.09.400RCR				
---------	--	------------	--------------	--	--	--	--

RIEJU

F-10 50	03.07.375.11	06.09.375RCE	06.09.375RCECR	06.08.375.11	06.08.375.12	06.10.175.31	
---------	--------------	--------------	----------------	--------------	--------------	--------------	--

SCOOTER 50_{cc} - 125_{cc} 2T



Merk / Model	Silent-Pro	Next-R	Next-R Chrom	Q-tre	Q-tre Chrom	Triops	Original-Pro
First 50	03.07.375.11	06.09.375RCE	06.09.375RCECR	06.08.375.11	06.08.375.12	06.10.175.31	
RS 50 Sport	03.07.375.11	06.09.375RCE	06.09.375RCECR	06.08.375.11	06.08.375.12	06.10.175.31	
Windy 50	03.07.375.11	06.09.375RCE	06.09.375RCECR	06.08.375.11	06.08.375.12	06.10.175.31	

SIAMOTO

Birdie 50	03.07.375.11	06.09.375RCE	06.09.375RCECR	06.08.375.11	06.08.375.12	06.10.175.31	
Mat 50	03.07.375.11	06.09.375RCE	06.09.375RCECR	06.08.375.11	06.08.375.12	06.10.175.31	
Scross 50	03.07.360.11	06.09.360R					
Top Racing 50	03.07.375.11	06.09.375RCE	06.09.375RCECR	06.08.375.11	06.08.375.12	06.10.175.31	

SUZUKI

AP 50 Adress	03.07.360.11	06.09.360R					
AP 50 Adress RF	03.07.360.11	06.09.360R					
CP 50 Lido	03.07.362						
Estilete 50	03.07.363.11	06.09.379RCE	06.09.379RCECR				
Katana 50	03.07.363.11	06.09.379RCE	06.09.379RCECR				
Street Magic 50	03.07.363.11	06.09.360R					
Zillion 50	03.07.363.11	06.09.379RCE	06.09.379RCECR				

SYM

DD 50	03.07.161.11	06.09.161R	06.09.161RCR				
Jet 50	03.07.503.11	06.09.503R	06.09.503RCR	06.08.503	06.08.503.20	06.10.103.30	
Jungle 50	03.07.503.11	06.09.503R	06.09.503RCR	06.08.503	06.08.503.20	06.10.103.30	
Mask 50	03.07.503.11	06.09.503R	06.09.503RCR	06.08.503	06.08.503.20	06.10.103.30	
Orbit 50 2T	03.07.503.11	06.09.503R	06.09.503RCR	06.08.503	06.08.503.20	06.10.103.30	
Red Devil 50	03.07.503.11	06.09.503R	06.09.503RCR	06.08.503	06.08.503.20	06.10.103.30	
RS 50	03.07.503.11	06.09.503R	06.09.503RCR	06.08.503	06.08.503.20	06.10.103.30	
Shark 50	03.07.503.11	06.09.503R	06.09.503RCR	06.08.503	06.08.503.20	06.10.103.30	
Super Fancy	03.07.503.11	06.09.503R	06.09.503RCR	06.08.503	06.08.503.20	06.10.103.30	
Symply	03.07.503.11	06.09.503R	06.09.503RCR	06.08.503	06.08.503.20	06.10.103.30	

TGB

101R 50	03.07.181	06.09.181R	06.09.181RCR				
101S 50	03.07.181	06.09.181R	06.09.181RCR				
202T 50	03.07.181	06.09.181R	06.09.181RCR				
203 50	03.07.181	06.09.181R	06.09.181RCR				

SCOOTER 50_{cc} - 125_{cc} 2T



Merk / Model	Silent-Pro	Next-R	Next-R Chromo	Q-tre	Q-tre Chromo	Triops	Original-Pro
303 RS 50	03.07.181	06.09.181R	06.09.181RCR				
309 Racing 50	03.07.181	06.09.181R	06.09.181RCR				
Akros 50	03.07.181	06.09.181R	06.09.181RCR				
Bullet 50	03.07.181	06.09.181R	06.09.181RCR				
Bullet 50 RS		06.09.186R	06.09.186RCR				
Delivery 50	03.08.184						
Double X 50	03.07.181	06.09.181R	06.09.181RCR				
Express 50	03.08.184						
F409 50	03.07.181	06.09.181R	06.09.181RCR				
Hawk 50	03.07.181	06.09.181R	06.09.181RCR				
Laser 50	03.07.181	06.09.181R	06.09.181RCR				
Tapo 50	03.07.181	06.09.181R	06.09.181RCR				
TNG							
LS 50	03.07.375.11	06.09.375RCE	06.09.375RCECR	06.08.375.11	06.08.375.12	06.10.175.31	
SS 50	03.07.375.11	06.09.375RCE	06.09.375RCECR	06.08.375.11	06.08.375.12	06.10.175.31	
Venice 50	03.07.375.11	06.09.375RCE	06.09.375RCECR	06.08.375.11	06.08.375.12	06.10.175.31	
TOMOS							
A35B Targa 50		06.09.551	06.09.551RCR				
Streetmate 50		06.09.552R					
UVM							
Bingo 50	03.07.300.11	06.09.300RCE					
VENTO							
Triton GT5 50	03.07.375.11	06.09.375RCE	06.09.375RCECR	06.08.375.11	06.08.375.12	06.10.175.31	
Triton LI 2T 50	03.07.375.11	06.09.375RCE	06.09.375RCECR	06.08.375.11	06.08.375.12	06.10.175.31	
Triton r4 50	03.07.375.11	06.09.375RCE	06.09.375RCECR	06.08.375.11	06.08.375.12	06.10.175.31	
Zip R3i 50	03.07.375.11	06.09.375RCE	06.09.375RCECR	06.08.375.11	06.08.375.12	06.10.175.31	
YAMAHA							
Aerox 50	03.07.375.11	06.09.375RCE	06.09.375RCECR	06.08.375.11	06.08.375.12	06.10.175.31	
Aerox 100	03.07.380	06.09.380R	06.09.380RCR				
Axis 50	03.07.375.11	06.09.375RCE	06.09.375RCECR	06.08.375.11	06.08.375.12	06.10.175.31	
Breeze 50	03.07.375.11	06.09.375RCE	06.09.375RCECR	06.08.375.11	06.08.375.12	06.10.175.31	
Bump 50	03.07.376.11	06.09.376RCE	06.09.376RCECR	06.08.376.11	06.08.376.12		

SCOOTER 50_{cc} - 125_{cc} 2T



Merk / Model	Silent-Pro	Next-R	Next-R Chroom	Q-tre	Q-tre Chroom	Triops	Original-Pro
Bw's 50	03.07.376.11	06.09.376RCE	06.09.376RCECR	06.08.376.11	06.08.376.12		
Bw's Next Generation 50	03.07.380	06.09.380R	06.09.380RCR				
Jog 50	03.07.375.11	06.09.375RCE	06.09.375RCECR	06.08.375.11	06.08.375.12	06.10.175.31	
Jog 90	03.07.380	06.09.380R	06.09.380RCR				
Jog RR 50	03.07.375.11	06.09.375RCE	06.09.375RCECR	06.08.375.11	06.08.375.12	06.10.175.31	
Neo's 25 km/h 50	03.07.382						
Neo's 50	03.07.375.11	06.09.375RCE	06.09.375RCECR	06.08.375.11	06.08.375.12	06.10.175.31	
Neo's 100	03.07.380	06.09.380R	06.09.380RCR				
Slider 50	03.07.376.11	06.09.376RCE	06.09.376RCECR	06.08.376.11	06.08.376.12		
Spy 50	03.07.376.11	06.09.376RCE	06.09.376RCECR	06.08.376.11	06.08.376.12		
Target 50	03.07.376.11	06.09.376RCE	06.09.376RCECR	06.08.376.11	06.08.376.12		
Vino 50	03.07.375.11	06.09.375RCE	06.09.375RCECR	06.08.375.11	06.08.375.12	06.10.175.31	
Why 50	03.07.375.11	06.09.375RCE	06.09.375RCECR	06.08.375.11	06.08.375.12	06.10.175.31	
Zest 50	03.07.375.11	06.09.375RCE	06.09.375RCECR	06.08.375.11	06.08.375.12	06.10.175.31	
Zuma 50	03.07.375.11	06.09.375RCE	06.09.375RCECR	06.08.375.11	06.08.375.12	06.10.175.31	
Zuma II 50	03.07.376.11	06.09.376RCE	06.09.376RCECR	06.08.376.11	06.08.376.12		

SCOOTER 50_{cc} - 125_{cc} 4T



Merk / Model	Silent-Pro	Next-R	Next-R Chrom	4SCOOT-TRE	4SCOOT-TRE B.E.	GP4	Original-Pro
AGM							
Flash 4T	03.07.505.11	06.09.505RCE	06.09.505RCECR	06.29.505.11	06.29.505.11B	06.19.505.11	
Retro 4T	03.07.750						
VX-50 4T	03.07.700						
APRILIA							
Scarabeo 50 4T2V	03.07.045	06.09.045R		06.29.045.11	06.29.045.11B	06.19.045.11	
Sporcity One 4T2V	03.07.045	06.09.045R		06.29.045.11	06.29.045.11B	06.19.045.11	
BAOTIAN							
BT49QT Engine (SPEEDY) 4T	03.07.505.11	06.09.505RCE	06.09.505RCECR	06.29.505.11	06.29.505.11B	06.19.505.11	
BT50QT Engine (CAMINO)4T	03.07.505.11	06.09.505RCE	06.09.505RCECR	06.29.505.11	06.29.505.11B	06.19.505.11	
BENZHO							
City star 4T	03.07.505.11	06.09.505RCE	06.09.505RCECR	06.29.505.11	06.29.505.11B	06.19.505.11	
Retro 4T	03.07.750						
BERINI							
Bella Milano 4T	03.07.750						
Dolce Vita 4T	03.07.505.11	06.09.505RCE	06.09.505RCECR	06.29.505.11	06.29.505.11B	06.19.505.11	
Napoli 4T	03.07.700						
Speedy 4T	03.07.505.11	06.09.505RCE	06.09.505RCECR	06.29.505.11	06.29.505.11B	06.19.505.11	
BTC							
Grand Retro 4T	03.07.750						
Jet 4T	03.07.505.11	06.09.505RCE	06.09.505RCECR	06.29.505.11	06.29.505.11B	06.19.505.11	
Old Classic 4T	03.07.750	06.09.505RCE	06.09.505RCECR	06.29.505.11	06.29.505.11B	06.19.505.11	
Riva 4T	03.07.700						
DERBI							
Atlantis 4T2V	03.07.045	06.09.045R		06.29.045.11	06.29.045.11B	06.19.045.11	
GARELLI							
Tiesse Four 50 4T	03.07.505.11	06.09.505RCE	06.09.505RCECR	06.29.505.11	06.29.505.11B	06.19.505.11	
Xò 50 4T	03.07.505.11	06.09.505RCE	06.09.505RCECR	06.29.505.11	06.29.505.11B	06.19.505.11	
Grand Retro 50 4T	03.07.750						
HONDA							
Vision 50 NM 4T 16"	03.07.176						

SCOOTER 50_{cc} - 125_{cc} 4T



Merk / Model	Silent-Pro	Next-R	Next-R Chrom	4SCOOT-TRE	4SCOOT-TRE B.E.	GP4	Original-Pro
KYMCO							
Agility 50 4T	03.07.505.11	06.09.505RCE	06.09.505RCECR	06.29.505.11	06.29.505.11B	06.19.505.11	
DJS 50 4T	03.07.505.11	06.09.505RCE	06.09.505RCECR	06.29.505.11	06.29.505.11B	06.19.505.11	
Filly 4T	03.07.505.11	06.09.505RCE	06.09.505RCECR	06.29.505.11	06.29.505.11B	06.19.505.11	
Like 50 4T	03.07.505.11	06.09.505RCE	06.09.505RCECR	06.29.505.11	06.29.505.11B	06.19.505.11	
People 50 4T	03.07.505.11	06.09.505RCE	06.09.505RCECR	06.29.505.11	06.29.505.11B	06.19.505.11	
Sento 50 4T	03.07.505.11	06.09.505RCE	06.09.505RCECR	06.29.505.11	06.29.505.11B	06.19.505.11	
Super 8 4T	03.07.505.11	06.09.505RCE	06.09.505RCECR	06.29.505.11	06.29.505.11B	06.19.505.11	
Vitality 4T	03.07.505.11	06.09.505RCE	06.09.505RCECR	06.29.505.11	06.29.505.11B	06.19.505.11	
LIFAN							
139QMB Engine 4T	03.07.505.11	06.09.505RCE	06.09.505RCECR	06.29.505.11	06.29.505.11B	06.19.505.11	
LINTEX							
HT 50 QT-12 4T	03.07.700						
HT 50 QT-29 4T	03.07.750						
HT 50 QT-39 4T	03.07.505.11	06.09.505RCE	06.09.505RCECR	06.29.505.11	06.29.505.11B	06.19.505.11	
MALAGUTI							
Centro 50 4T2V	03.07.045	06.09.045R		06.29.045.11	06.29.045.11B	06.19.045.11	
DVD 50 4T	03.07.045	06.09.045R		06.29.045.11	06.29.045.11B	06.19.045.11	
NECO							
Borsalino Uno 4T	03.07.750						
PEGASUS							
GP 50 4T	03.07.505.11	06.09.505RCE	06.09.505RCECR	06.29.505.11	06.29.505.11B	06.19.505.11	
S 50 LX 4T	03.07.505.11	06.09.505RCE	06.09.505RCECR	06.29.505.11	06.29.505.11B	06.19.505.11	
PEUGEOT							
Kisbee 50 4T	03.07.754						
Tweet 4T	03.07.755						
V-Clic 50 4T	03.07.505.11	06.09.505RCE	06.09.505RCECR	06.29.505.11	06.29.505.11B	06.19.505.11	
PIAGGIO							
Fly 50 4T2V	03.07.045	06.09.045R		06.29.045.11	06.29.045.11B	06.19.045.11	03.27.045.11
Fly 50 4T 4 valves	03.07.055					06.19.055.11	03.27.056.11
Liberty 50 4Tv 2V	03.07.045	06.09.045R		06.29.045.11	06.29.045.11B	06.19.045.11	03.27.045.11

SCOOTER 50_{cc} - 125_{cc} 4T



Merk / Model	Silent-Pro	Next-R	Next-R Chrom	4SCOOT-TRE	4SCOOT-TRE B.E.	GP4	Original-Pro
Liberty 50 4Tv 4V	03.07.055					06.19.055.11	03.27.056.11
Vespa ET4 50 4T 2V	03.07.045	06.09.045R		06.29.045.11	06.29.045.11B	06.19.045.11	03.27.045.11
Vespa LX 50 4T 2V	03.07.045	06.09.045R		06.29.045.11	06.29.045.11B	06.19.045.11	03.27.045.11
Vespa LX 50 4T 2V 25 KM	03.07.045	06.09.045R		06.29.045.11	06.29.045.11B	06.19.045.11	03.27.045.11
Vespa LX 50 4T 4 valves	03.07.055					06.19.056.11	03.27.056.11
Vespa LX 125 3V						06.19.850.11	
Vespa Primavera 50 4T 2V	03.07.055					06.19.056.11	03.27.056.11
Vespa S 50 4T 2V	03.07.045	06.09.045R		06.29.045.11	06.29.045.11B	06.19.045.11	03.27.045.11
Vespa S 50 4T 4 valves	03.07.055					06.19.056.11	03.27.056.11
Vespa S 125 3V						06.19.850.11	
Vespa Sprint 4T 4V	03.07.055					06.19.056.11	03.27.056.11
Zip 50 4T 2V	03.07.045	06.09.045R		06.29.045.11	06.29.045.11B	06.19.045.11	
Zip 50 4T 2V 25km	03.07.045	06.09.045R		06.29.045.11	06.29.045.11B	06.19.045.11	
Zip 50 4T Euro 4	03.07.057						
RIEJU							
Pacific 4T	03.07.505.11	06.09.505RCE	06.09.505RCECR	06.29.505.11	06.29.505.11B	06.19.505.11	
Paseo 4T	03.07.505.11	06.09.505RCE	06.09.505RCECR	06.29.505.11	06.29.505.11B	06.19.505.11	
Toreo 4T	03.07.505.11	06.09.505RCE	06.09.505RCECR	06.29.505.11	06.29.505.11B	06.19.505.11	
ROVER							
Classic 4T	03.07.750						
Fun 4T	03.07.505.11	06.09.505RCE	06.09.505RCECR	06.29.505.11	06.29.505.11B	06.19.505.11	
SF 3 4T	03.07.505.11	06.09.505RCE	06.09.505RCECR	06.29.505.11	06.29.505.11B	06.19.505.11	
SANTINI							
Firenze 4T	03.07.700						
Sanremo 4T	03.07.505.11	06.09.505RCE	06.09.505RCECR	06.29.505.11	06.29.505.11B	06.19.505.11	
SYM							
Allo 50 4T	03.07.753					06.19.753.11	
Fiddle II 50 4T (New Engine)	03.07.752						
Fiddle II 50 4T (Old Engine)	03.07.754						
Fiddle III 50 4T	03.07.757						
Fiddle III 50 4T Euro 4 with Lambda	03.07.757						
Jet 4 50 4T	03.07.753					06.19.753.11	

SCOOTER 50_{cc} - 125_{cc} 4T



Merk / Model	Silent-Pro	Next-R	Next-R Chrom	4SCOOT-TRE	4SCOOT-TRE B.E.	GP4	Original-Pro
Mio 50 4T	03.07.751						
Orbit II 4T (New Engine)	03.07.752						
Symphony 4T	03.07.755						
X-PRO 4T	03.07.756						
TGB							
Cappuccio 4T	03.07.505.11	06.09.505RCE	06.09.505RCECR	06.29.505.11	06.29.505.11B	06.19.505.11	
TURBHO							
CX-50 4T	03.07.505.11	06.09.505RCE	06.09.505RCECR	06.29.505.11	06.29.505.11B	06.19.505.11	
RG-50 4T	03.07.750						
RL-50 4T	03.07.700						
Vento 4T							
Triton LI 4T	03.07.505.11	06.09.505RCE	06.09.505RCECR	06.29.505.11	06.29.505.11B	06.19.505.11	
ZNEN							
Aurora 4T	03.07.750						
ZN50QT-11 4T	03.07.505.11	06.09.505RCE	06.09.505RCECR	06.29.505.11	06.29.505.11B	06.19.505.11	

MOPED 50_{cc}



Merk / Model	G-Box	E-Nox RVS	E-Nox Steel	XS	E-Nox Evo RVS	E-Nox Evo Steel	Original-Pro
APRILIA							
MX 50			06.12.500.01				
RS 50 '10	06.16.852.27						
RS 50 <'06	06.16.830.27						
RS 50 >'06	06.16.851.17						
RX 50 '96 - '05	06.16.870.27		06.12.500.01				
RX 50 >'05	06.16.870.27	06.12.530.16	06.12.530.21		06.12.530.36	06.12.530.31	
RX 50 Euro 4					06.12.530.36	06.12.530.31	
SX 50		06.12.530.16	06.12.530.21		06.12.530.36	06.12.530.31	
SX 50 Euro 4					06.12.530.36	06.12.530.31	
BETA							
RR 50	06.16.870.27		06.12.510.01				
RR 50 < 15	06.16.870.27		06.12.510.01				
RR 50 Euro 3 '12 - '17				06.06.833.12	06.12.511.36	06.12.511.31	06.27.511.11
RR 50 Euro 4 > 2016				06.06.833.12	06.12.511.36	06.12.511.31	06.27.511.11
RR 50 Truba Euro 3 '12 - '17				06.06.833.12	06.12.511.36	06.12.511.31	06.27.511.11
RR 50 Truba Euro 4 > 2016				06.06.833.12	06.12.511.36	06.12.511.31	06.27.511.11
RRT	06.16.870.27		06.12.510.01	06.06.830.12			
BULTACO							
Lobito			06.12.520.21				
CPI							
SM 50			06.12.550.01				
SX 50			06.12.550.01				
DERBI							
GRR 50 '04 - '09	06.16.851.17						
GRR 50 > '09	06.16.852.27						
Senda <'99			06.12.520.21				
Senda >'00	06.16.870.27	06.12.530.16	06.12.530.21	06.06.870.12	06.12.511.36	06.12.511.31	
Senda Euro 4					06.12.511.36	06.12.511.31	
Senda DRD Evo	06.16.870.27	06.12.530.16	06.12.530.21		06.12.511.36	06.12.511.31	
Senda DRD Evo Euro 4					06.12.511.36	06.12.511.31	
Senda R DRD	06.16.870.27	06.12.530.16	06.12.530.21		06.12.511.36	06.12.511.31	

MOPED 50_{cc}



Merk / Model	G-Box	E-Nox RVS	E-Nox Steel	XS	E-Nox Evo RVS	E-Nox Evo Steel	Original-Pro
Senda R DRD Euro 4					06.12.511.36	06.12.511.31	
Senda Racer	06.16.870.27	06.12.530.16	06.12.530.21		06.12.511.36	06.12.511.31	
Senda Racer Euro 4					06.12.511.36	06.12.511.31	
Senda X-Race	06.16.870.27	06.12.530.16	06.12.530.21		06.12.511.36	06.12.511.31	
Senda X-Race Euro 4					06.12.511.36	06.12.511.31	
Senda x-Treme	06.16.870.27	06.12.530.16	06.12.530.21		06.12.511.36	06.12.511.31	
Senda x-Treme Euro 4					06.12.511.36	06.12.511.31	

FACTORY BIKE

Crono SM50 (YR50)	06.16.870.27						
-------------------	--------------	--	--	--	--	--	--

GAS GAS

Rookie 50			06.12.580.01				
-----------	--	--	--------------	--	--	--	--

GILERA

GPR 50	06.16.851.17						
RCR		06.12.530.16	06.12.530.21		06.12.530.36	06.12.530.31	
RCR Euro 4					06.12.530.36	06.12.530.31	
SMT		06.12.530.16	06.12.530.21		06.12.530.36	06.12.530.31	
SMT Euro 4					06.12.530.36	06.12.530.31	

HM

CRE 50			06.12.571.21				
--------	--	--	--------------	--	--	--	--

MALAGUTI

XSM (Minarelli Engine)		06.12.541.16	06.12.541.21				06.27.541.11
XTM (Minarelli Engine)		06.12.541.16	06.12.541.21				06.27.541.11

MBK

X-Limit 50		06.12.541.16	06.12.541.21				
X-Power	06.16.830.27						

MH

Furia	06.16.870.27	06.12.540.16	06.12.540.21				
Racing RX	06.16.870.27						
RYZ 50		06.12.541.16	06.12.541.21				06.27.541.11

PEUGEOT

XP6		06.12.540.16	06.12.540.21				
XPS		06.12.541.16	06.12.541.21				06.27.541.11

MOPED 50_{cc}



Merk / Model	G-Box	E-Nox RVS	E-Nox Steel	XS	E-Nox Evo RVS	E-Nox Evo Steel	Original-Pro
XR6	06.16.870.27						
RIEJU							
Matrix RS2	06.16.830.27						
MRT	06.16.870.27	06.12.542.16	06.12.542.21	06.06.830.12	06.12.542.36	06.12.542.31	
MRT 50 PRO	06.16.870.27	06.12.542.16	06.12.542.21	06.06.830.12	06.12.542.36	06.12.542.31	
MRT 50 PREPLICA	06.16.870.27	06.12.542.16	06.12.542.21	06.06.830.12	06.12.542.36	06.12.542.31	
MRT 50 SM PRO	06.16.870.27	06.12.542.16	06.12.542.21	06.06.830.12	06.12.542.36	06.12.542.31	
MRT 50 SM TROPHY	06.16.870.27	06.12.542.16	06.12.542.21	06.06.830.12	06.12.542.36	06.12.542.31	
MRX	06.16.870.27	06.12.540.16	06.12.540.21	06.06.830.12			
RJ	06.16.870.27	06.12.540.16	06.12.540.21				
RR	06.16.870.27	06.12.540.16	06.12.540.21				
RRX 50	06.16.870.27	06.12.540.16	06.12.540.21				
RS1	06.16.830.27						
RS3	06.16.830.27						
SMX	06.16.870.27	06.12.540.16	06.12.540.21				
Spike X 50	06.16.870.27	06.12.540.16	06.12.540.21				
Tango 50	06.16.870.27						
SHERCO							
50 SE-R	06.16.821.27		06.12.521.21		06.12.521.36	06.12.521.31	06.27.521.11
50 SE-RS	06.16.821.27		06.12.521.21		06.12.521.36	06.12.521.31	06.27.521.11
50 SM-R	06.16.821.27		06.12.521.21		06.12.521.36	06.12.521.31	06.27.521.11
SUZUKI							
RMX 50			06.12.560.01				
SMX 50			06.12.560.01				
YAMAHA							
DT 50	06.16.870.27	06.12.541.16	06.12.541.21	06.06.840.12			
DT 50 '04							06.27.541.11
TZR 50	06.16.830.27						

MAXISCOOTER



Merk / Model	Maxi-4	Maxi-4N	4SCOOT	4SCOOT Evo	4SCOOT Evo B.E.	Original-Pro
APRILIA						
Atlantic 125 S (QUASAR)		03.37.803.21	06.39.802.11			
Company 125 / 150 (LEADER)	03.37.852.11					03.27.852.11
Habana 125 / 150 (LEADER)	03.37.852.11					03.27.852.11
Mojito 125 / 150 (LEADER)	03.37.852.11					03.27.852.11
Scarabeo 125 - 200 (QUASAR)		03.37.800.21	06.39.800.11			
Scarabeo 250i - 300i (QUASAR)		03.37.801.21		06.39.801.21	06.39.801.21B	
Sportcity 125 (QUASAR)		03.37.800.21	06.39.800.11			
Sportcity 300 (QUASAR)		03.37.801.21		06.39.801.21	06.39.801.21B	
Sportcity One 125 4T (LEADER)	03.37.804.11		06.39.804.11			
SR Motard 125	03.37.804.11		06.39.804.11			
CLIPIC						
New City 125	03.37.010					
COOLTRA						
City 125	03.37.020.11					
Daelim						
NSII 125	03.37.600.11					
DERBI						
Boulevard 125 4T (LEADER)	03.37.804.11		06.39.804.11			03.27.852.11
Rambla 125 (QUASAR)		03.37.800.21	06.39.800.11			
Rambla 300i (QUASAR)		03.37.801.21		06.39.801.21	06.39.801.21B	
Sonar 125 4T (LEADER)	03.37.804.11		06.39.804.11			03.27.852.11
Variant Sport 125 4T (LEADER)	03.37.804.11		06.39.804.11			03.27.852.11
HONDA						
@ 125		03.37.100.21	06.39.100.11	06.39.100.21		
@ 125i		03.37.103.21	06.39.103.11			
Dylan 125 / 150		03.37.100.21	06.39.100.11	06.39.100.21		
Lead 100 4T	03.37.175.11					
Pantheon 125i / 150i 4T	03.37.104.11					
PCX 125	03.37.106.11	03.37.101.21	06.39.102.11		06.39.106.21B	
PCX 125 (ESP Engine)		03.37.101.21	06.39.102.11		06.39.102.21B	

MAXISCOOTER



Merk / Model	Maxi-4	Maxi-4N	4SCOOT	4SCOOT Evo	4SCOOT Evo B.E.	Original-Pro
PS 125i / 150i		03.37.103.21	06.39.103.11			
S-Wing 125 / 150	03.37.104.11					
SH 125 / 150		03.37.100.21	06.39.100.11	06.39.100.21	06.39.100.21B	
SH 125i (ESP Engine)		03.37.101.21	06.39.101.11	06.39.101.21	06.39.101.21B	
SH 300i		03.37.105.21	06.39.105.11	06.39.105.21	06.39.105.21B	
SHi 125 / 150		03.37.103.21	06.39.103.11		06.39.103.21B	
Vision 110	03.37.107.11					
KYMCO						
Agility 125 / 150 16"	03.37.507.11		06.39.507.11			
Agility 125 12"	03.37.506.11					
Agility City 125 / 150	03.37.507.11		06.39.507.11			
Agility City 125i / 150i >'16 (Eur4)	03.37.515.11		06.39.515.11			
Down Town 125i		03.37.509.21	06.39.509.11			
Grand Dink 125 >'07		03.37.512.21	06.39.512.11			
Joyride 200i					06.39.711.21B	
K-XCT 125i			06.39.510.11			
K-XCT 300i				06.39.511.21	06.39.511.21B	
Like 125 (disk brake)	03.37.508.11		06.39.508.11			
Like 125 (drum brake)	03.37.500.11		06.39.500.11			
People GTI 125		03.37.513.21	03.39.708.11			
People S 125 / 150 (disk brake)	03.37.507.11		06.39.507.11			
People S 125 / 150 (drum brake)	03.37.500.11		06.39.500.11			
Super 8 125	03.37.500.11		06.39.500.11			
Super Dink 125i		03.37.509.21	06.39.509.11			
Super Dink 300i		03.37.514.21		06.39.514.21	06.39.514.21B	
MBK						
Skycruiser 125 '07-'09		03.37.303.21	06.39.303.11			
PEUGEOT						
Elystar 125	03.37.202.11					
Geopolis 125		03.37.200.21	06.39.200.11			
Tweet 125 (disk brake)	03.37.703.11		06.39.703.11			

MAXISCOOTER



Merk / Model	Maxi-4	Maxi-4N	4SCOOT	4SCOOT Evo	4SCOOT Evo B.E.	Original-Pro
PIAGGIO						
Beverly 125 (QUASAR)		03.37.800.21	06.39.800.11			
Beverly 250i / 300i (QUASAR)		03.37.801.21		06.39.801.21	06.39.801.21B	
Carnaby 125 - 200 (QUASAR)		03.37.800.21	06.39.800.11			
Carnaby 250 - 300 (QUASAR)		03.37.801.21		06.39.801.21	06.39.801.21B	
Fly 125 (LEADER)	03.37.804.11		06.39.804.11			03.27.852.11
Liberty 125 3V			06.39.806.11			
Liberty 125 - 200 (LEADER)	03.37.804.11		06.39.804.11			03.27.852.11
Typhoon 125 / 150 (LEADER)	03.37.804.11		06.39.804.11			03.27.852.11
Vespa ET4 125/150 (LEADER)	03.37.852.11					03.27.852.11
Vespa GTS 300i (LEADER)		03.37.851.21		06.39.851.21	06.39.851.21B	
Vespa LXv 125 ie (leader)						03.27.852.11
Vespa LX 125 / 150 (LEADER)	03.37.852.11					03.27.852.11
Vespa LX 125 3 valves	03.37.850.11				03.27.850.11	
Vespa LX 125 IE (LEADER)						
Vespa S 125 3 valves	03.37.850.11				03.27.850.11	
Vespa S 125 ie (LEADER)						03.07.853.11
X8 125 -200 (LEADER)	03.37.804.11		06.39.804.11			
X8 125 -200 (QUASAR)		03.37.802.21	06.39.802.11			
X9 Evolution '05 (QUASAR)		03.37.805.21	06.39.805.11			
SUZUKI						
Burgman 125 / 150 <2007		03.37.400.21	06.39.400.11		06.39.400.21B	
Burgman 125i / 150i >2007		03.37.401.21	06.39.401.11		06.39.401.21B	
Burgman 200i		03.37.402.21		06.39.402.21	06.39.402.21B	
SYM						
GTS / Joymax 125		03.37.705.21	06.39.705.11			
GTS / Joymax 125i			06.39.709.11			
GTS 125 '05-'10		03.37.706.21	06.39.706.11			
GTS 125 EVO >'10		03.37.706.21	06.39.706.11			
GTS 125i EVO		03.37.710.21	06.39.710.11			
GTSi 125i EVO		03.37.710.21	06.39.710.11			

MAXISCOOTER



Merk / Model	Maxi-4	Maxi-4N	4SCOOT	4SCOOT Evo	4SCOOT Evo B.E.	Original-Pro
GTS 300i				06.39.707.21	06.39.707.21B	
GTS 300i EVO		03.37.708.21		06.39.708.21	06.39.708.21B	
HD 125 EVO		03.37.705.21	06.39.705.11			
Jet 4 125			06.39.704.11			
Joymax 300i				06.39.707.21	06.39.707.21B	
Joyride 200i EVO		03.37.711.21		06.39.711.21		
Simply 2 125			06.39.702.11			
Symphony 125 (disk brake)	03.37.703.11		06.39.703.11			
Symphony 125i >'16 (Eur4)	03.37.712.11		06.39.712.11			
Symphony SR 125	03.37.703.11		06.39.703.11			
YAMAHA						
Bw's 125			06.39.304.11			
Cygnus 125 10"	03.37.302.11					
Cygnus 125 R 10"	03.37.302.11					
Cygnus X 125	03.37.307.11		06.39.307.11			
Majesty 125 / 150 >'01	03.37.300.11					
Majesty 250 DX		03.37.301.21	06.39.301.11	06.39.301.21	06.39.301.21B	
N-Max 125 <2018 CE	03.37.308.11		06.39.308.11			
X-Enter 125-150		03.37.305.21	06.39.305.11			
X Max 125		03.37.303.21	06.39.303.11		06.39.303.21B	
X-MAX 125 ('10-'16) CE		03.37.309.21		06.39.309.21		
X Max 250i		03.37.306.21		06.39.306.21	06.39.306.21B	

SILENCER

Art. 00.00.234

E-BOX
TITANIUM
€ 79,90



Art. 00.00.242

NONE
ZWART / SCHWARZ CARBON
€ 81,90



Art. 00.27.249

ORIGINAL-PRO
ZWART / SCHWARZ
€ 59,90



Art. 00.00.250

NEXT-R 2 GATS
ZILVER/TITANIUM
€ 59,90



Art. 00.00.254

G-BOX
KEVLAR
€ 89,90



Art. 00.00.255

SILENT SPORT
ALUTEX
€ 74,90



Art. 00.00.265

TREK II
TITANIUM
€ 79,90



Art. 00.00.266

TRIOPS
ZWART / SCHWARZ
€ 79,90



Art. 00.00.272

Q-TRE
ZWART / SCHWARZ
€ 47,90



Art. 00.00.279

NEXT-R 2gaats
ZWART / SCHWARZ
€ 75,90



Art. 00.00.284

E-NOX / RSG
ALU ZWART / SCHWARZ
€ 84,90



Art. 00.00.285

RS125/ TG2-RSG
ALU ZWART / SCHWARZ
€ 83,90



00.12.530.30

E-NOX EVO DERBI SENDA
ALU ZWART / SCHWARZ
€ 99,90



Art. 00.12.542.30

E-NOX EVO RIEJU MRT
ALU ZWART / SCHWARZ
€ 99,90



Art. 5226

NEXT
ALU
€ 49,90



Art. 5240

RS-TG2
ZILVER / SILBER CARBON
€ 69,90



Art. 85634

NEXT-R
ZWART / SCHWARZ
€ 71,90



Art. 85959

MX
ALU
€ 49,90



Art. 86840

TEK
BLAUW / BLAU
€ 55,90



Art. 87061

NEXT-R
GEEL / GELB
€ 69,90



Art. 87062

NEXT-R
GROEN / GRÜN
€ 69,90



TOEPASSINGLIJST / VERWENDUNGSLISTE

Alle producten in deze folder, inclusief de bijbehorende toepassingslijst, vindt u op onze website: **www.mokix.com**

Alle Produkte in diesem Prospekt, inklusive der dazugehörigen Zuordnungsliste, finden Sie auf unserer Webseite:
www.mokix.de

BOUWMAN

www.bouwman-import.nl

Official importer for Tecnigas Exhaust
for Netherlands, Germany and Belgium.

TECNIGAS2020/7

